

# History & Records

# Keydets Vs. All Opponents

	<b>W</b>	<b>L</b>	<b>First Met</b>	<b>Last Met</b>										
Alabama	1	2	1928	1995	Georgia	0	5	1926	1929	Roanoke Elks	2	0	1922	1924
Albright	1	0	1997	1997	Georgia Southern	5	10	1993	2003	Roanoke YMCA	3	1	1912	1921
Alderson Broaddus	1	0	1978	1978	Georgia State	2	0	1979	1979	Rutgers	0	2	1969	1976
Appalachian State	28	37	1973	2003	Georgia Tech	2	6	1921	1993	St. Francis (PA)	1	1	2003	2004
<b>Army</b>	<b>2</b>	<b>4</b>	<b>1971</b>	<b>2005</b>	Guilford	1	0	1912	1912	St. John's (MD)	6	7	1911	1934
Arkansas	1	2	1965	1990	Hampden-Sydney	20	9	1912	1985	St. Mary's (MD)	1	0	2002	2002
Arkansas State	0	1	1967	1967	Hardin-Simmons	0	1	1957	1957	Salem College	3	0	1974	1978
Ashford Gen. Hosp.	0	2	1944	1944	Harvard	1	0	2003	2003	Samford	0	2	1967	1968
Atlantic Christian	1	1	1970	1972	Hawaii	0	1	2000	2000	Sewanee College	2	1	1928	1931
Auburn	2	0	1920	1926	<b>High Point</b>	<b>1</b>	<b>6</b>	<b>2004</b>	<b>2006</b>	Shenandoah	7	0	1987	1999
Averett	2	0	1984	1986	<b>Howard</b>	<b>1</b>	<b>1</b>	<b>2001</b>	<b>2001</b>	Shepherd College	1	1	1974	1975
Baltimore University	0	2	1980	1981	Illinois State	0	1	1982	1982	Siena College	1	0	1978	1978
Baltimore YMCA	0	1	1909	1909	Indiana State	0	2	1969	1976	South Alabama	0	2	1971	1975
Bethany College	2	0	1975	1979	<b>James Madison</b>	<b>6</b>	<b>13</b>	<b>1974</b>	<b>2005</b>	South Carolina	3	7	1913	2001
Birmingham-Southern	0	6	2004	2006	<b>Kent State</b>	<b>1</b>	<b>1</b>	<b>1967</b>	<b>1991</b>	Southeastern	1	0	1976	1976
Binghamton	0	1	2004	2004	Kentucky	2	5	1914	2002	<b>Southern Virginia</b>	<b>5</b>	<b>0</b>	<b>1999</b>	<b>2005</b>
Bluefield	14	0	1980	2004	Kentucky Wesleyan	0	1	1960	1960	South Florida	0	1	1983	1983
Boston College	0	1	1956	1956	Lafayette	1	0	1993	1993	Southwest Louisiana	0	1	1981	1981
<b>Bridgewater</b>	<b>12</b>	<b>4</b>	<b>1924</b>	<b>1991</b>	Langley Field	1	0	1947	1947	Staunton Mil. Acad.	2	1	1909	1910
Brown	1	0	1990	1990	Lebanon Valley	2	0	1976	1980	Stetson	0	2	1970	1979
Bucknell	1	2	1961	1985	<b>Liberty</b>	<b>7</b>	<b>5</b>	<b>1976</b>	<b>2006</b>	Takola	2	0	1922	1923
California University	1	0	1977	1977	Lincoln Memorial	1	0	1925	1925	Tennessee	4	7	1911	2003
California-Irvine	0	1	1981	1981	Long Beach State	0	1	1978	1978	UT-Chattanooga	11	37	1978	2003
Campbell	1	1	1979	1981	Longwood	1	1	1983	2004	Texas	0	2	1988	1990
Camp Meade	0	1	1950	1950	Louisiana State	0	2	1957	1966	Texas San-Antonio	0	1	2004	2004
Carson-Newman	2	0	1925	1926	Louisiana Tech	0	1	1975	1975	Toledo	0	2	1971	1978
Catholic University	0	2	1914	1922	Louisville	0	1	2004	2004	Towson	2	2	1974	2005
Cedarville	1	0	1947	1947	Loyola (MD)	0	3	1974	2005	Trinity (Tex.)	0	1	1971	1971
Centenary (NJ)	2	1	1965	1995	Lynchburg AC	1	0	1924	1924	Tulane	1	1	1977	2004
Cent. Conn. St.	0	1	1993	1993	Lynchburg	20	4	1912	1998	UCLA	0	1	1981	1981
Central Florida	0	1	1979	1979	Lynchburg Elks	3	0	1921	1923	Union-Theo. (Va.)	1	0	1915	1915
Central Wesleyan	3	0	1976	1978	Lynchburg YMCA	2	1	1910	1913	Utah	0	1	1969	1969
Charleston, Coll. of	0	5	1999	2003	Maine	0	1	1982	1982	Vanderbilt	0	3	1958	1991
<b>*Charleston Southern</b>	<b>5</b>	<b>5</b>	<b>1980</b>	<b>2006</b>	Manhattan	0	1	1982	1982	Villanova	0	1	2002	2002
Christopher Newport	3	0	1975	1986	Marine Inst.	0	1	1946	1946	Virginia	15	99	1909	2004
The Citadel	44	53	1921	2003	Marshall	15	32	1953	1997	UVA-Wise	2	1	1980	2005
Clemson	1	6	1936	1964	Mary Washington	2	1	2001	2003	Virginia Christ. Col.	4	0	1913	1919
Cleveland St.	2	1	1978	1980	Maryland	10	42	1911	2005	Va. Commonwealth	0	1	2000	2000
<b>Coastal Carolina</b>	<b>1</b>	<b>5</b>	<b>2004</b>	<b>2006</b>	Memphis State	0	1	1958	1958	Virginia Medical Col.	1	0	1928	1928
Columbia	0	1	1966	1966	Middle Tennessee	0	2	1960	1975	Virginia Tech	43	85	1909	2004
Concord	1	0	1980	1980	Mississippi	0	1	1925	1925	Virginia Wesleyan	1	0	1975	1975
Connecticut	0	3	1952	1974	Morehead State	0	2	2001	2002	Wake Forest	4	18	1912	1999
<b>Cornell</b>	<b>1</b>	<b>0</b>	<b>1991</b>	<b>1991</b>	Morris Harvey	2	3	1951	1977	Warren Wilson	1	0	2000	2000
Corpus Christi	0	1	1973	1973	Mount St. Mary's	0	1	1990	1990	Washington & Lee	3	0	1941	1997
Davidson	30	75	1910	2003	Navy	1	21	1919	2004	Washington College	0	1	1923	1923
Davis & Elkins	0	1	1952	1952	New Mexico State	0	1	1973	1973	Washington State	0	1	2004	2004
Dayton	0	3	1974	1994	New Orleans	0	1	2004	2004	Weber State	0	1	1992	1992
Delaware	1	0	1924	1924	Newport News App.	0	1	1944	1944	Western Carolina	19	27	1978	2003
Denver	0	1	1956	1956	Norfolk NAS	1	2	1950	1952	Western Michigan	0	1	1981	1981
DePaul	1	0	1976	1976	Norfolk State	0	1	2003	2003	West Liberty St.	1	0	1979	1979
Duke	9	18	1911	1953	North Carolina	4	36	1913	1997	West Virginia	4	42	1916	1969
Duquesne	1	0	1977	1977	North Carolina State	7	21	1916	2005	West Virginia Tech	4	3	1951	1998
East Carolina	8	19	1963	1977	Notre Dame	0	1	2000	2000	W. Va. Wesleyan	3	1	1920	1972
East Illinois	0	2	1971	1972	<b>UNC Asheville</b>	<b>2</b>	<b>8</b>	<b>1989</b>	<b>2006</b>	<b>William &amp; Mary</b>	<b>38</b>	<b>76</b>	<b>1915</b>	<b>1996</b>
East Tennessee State	13	40	1953	2003	UNC Charlotte	0	3	1997	1999	<b>Winthrop</b>	<b>5</b>	<b>4</b>	<b>1992</b>	<b>2006</b>
Eastern Mennonite	6	0	1989	2004	UNC Greensboro	7	8	1979	2003	Wisc.-Green Bay	0	1	1976	1976
Elon College	6	6	1914	1999	N.C. Wesleyan	0	1	1983	1983	Wofford	6	5	1970	2003
Emory & Henry	7	3	1912	1984	Ohio University	0	1	1972	1972	W. Wilson Hospital	0	2	1944	1944
Farleigh-Dickinson	1	1	1979	1980	Old Dominion	4	19	1968	2005	Xavier	1	0	1973	1973
Ferrum	2	0	2000	2005	Oklahoma City	1	0	1977	1977					
Florida	1	3	1921	2000	Oral Roberts	2	0	1988	2000					
Florida International	0	1	1997	1997	Pacific	1	0	1976	1976					
Florida Southern	1	0	1970	1970	Pennsylvania	0	2	1921	1961					
Florida State	1	2	1964	1966	<b>Penn State</b>	<b>1</b>	<b>2</b>	<b>1996</b>	<b>1999</b>					
Ft. Belvoir	1	0	1947	1947	Presbyterian	1	0	1957	1957					
Furman	32	56	1939	2003	<b>Princeton</b>	<b>0</b>	<b>1</b>	<b>1964</b>	<b>1964</b>					
Gallaudet	1	0	1933	1933	Quantico Marines	0	4	1947	1951					
Gardner-Webb	0	1	1971	1971	<b>Radford</b>	<b>11</b>	<b>12</b>	<b>1976</b>	<b>2006</b>					
George Mason	1	0	1980	1980	Randolph-Macon	10	0	1909	2001					
George Washington	17	42	1913	1975	Rice	0	1	1973	1973					
Georgetown	0	4	1913	2003	<b>Richmond</b>	<b>42</b>	<b>82</b>	<b>1916</b>	<b>2002</b>					
					Richmond Prof. Ins.	1	0	1955	1955					
					Roanoke College	24	22	1911	1988					

In 95 years, VMI has played 213 opponents, winning 725 games and losing 1312 games.

**Bold face type denotes 2006-07 opponents.**  
**Bold italic face type denotes 2006-07 possible tournament opponents.**

\*- Formerly known as Baptist College

**VMI has never faced Ohio State, Loyola Chicago, South Dakota St., IUPUI, Alabama A&M, Virginia Intermont, Jacksonville St., Lees-McRae, Mercer and S.C. State.**

# A Look Back to 1975-76

*Thirty years ago, VMI made a miraculous journey that ended just one game from the Final Four.*



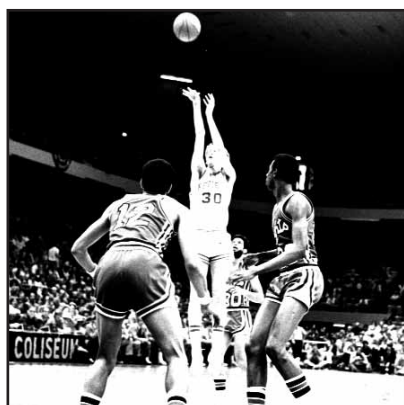
*Ron Carter drives against DePaul in the East Regional.*



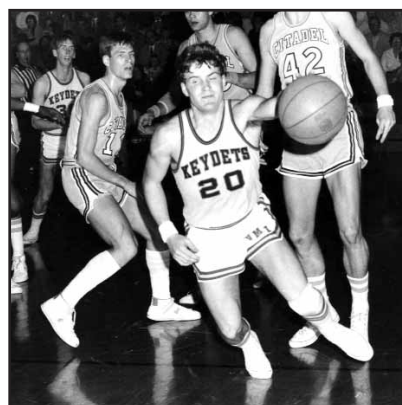
*The celebrations of 1976 are still remembered today.*



*VMI began its courageous run in the NCAA Tournament by upsetting Tennessee in a first round game played in Charlotte, N.C.*



*Will Bynum fires over two Rutgers Scarlet Knights in the East Regional final.*



*Curt Reppart captained the 1975-76 squad.*

# Single Game Records

All Records Since  
Conference Realignment in 1953

## TEAM

**MOST POINTS** .....114 vs. UNC - Greensboro, 1978

**MOST REBOUNDS** ..... 67 vs. Southeastern, 1976

**MOST ASSISTS** ..... 30 vs. Eastern Mennonite, 2003

**MOST STEALS** .....25 vs. Bluefield, 1992

**MOST BLOCKS** .....15 vs. Appalachian State, 2003

**FEWEST POINTS** .....32 vs. Coastal Carolina, 2004

**FEWEST POINTS ALLOWED** .....  
..33 vs. Richmond,1976; Lebanon Valley, 1980 & SVU, 2005

**MOST POINTS TWO TEAM** .....  
.....221 (VMI 96, California-Irvine 125), 1981

**FEWEST POINTS TWO TEAMS** .....  
.....72 (VMI 37,William & Mary 35, OT), 1972

**MOST FIELD GOALS MADE** .....49 vs. Salem, 1976

**MOST FIELD GOALS ATTEMPTED** .....  
.....93, vs. Eastern Mennonite, 1997

**HIGHEST FIELD GOAL PERCENTAGE** .....  
.....71.4% (30 of 42) vs. Appalachian State, 1987

**MOST 3-PT FIELD GOALS ATTEMPTED** .....  
.....43 vs. Western Carolina, 1996

**MOST 3-PT FIELD GOALS MADE** .....  
..17 vs. Western Carolina, 1996; vs. Shenandoah, 1992

**HIGHEST 3-PT FIELD GOAL PERCENTAGE** .....  
.....87.5% (7-8) vs. Western Carolina, 1989

**FEWEST FIELD GOALS** ....10 vs. Coastal Carolina, 2004

**FEWEST FIELD GOALS ALLOWED** .....  
.....12 vs. William & Mary, 1972

**MOST FREE THROWS MADE** .....  
.....38 vs. West Virginia Tech, 1955

**MOST FREE THROWS ATTEMPTED** .....  
.....53 vs. The Citadel, 1956

**FEWEST FREE THROWS MADE** .....  
.....2 vs. Old Dominion 1976; vs. UT Chattanooga, 1984; vs. Roanoke, 1988; vs. William & Mary, 1991

**FEWEST FREE THROWS ATTEMPTED** .....  
.....2 vs. Roanoke,1988

**FEWEST FREE THROWS ALLOWED** .....  
.....1 vs. Army, 2005

**FEWEST FREE THROW ATTEMPTS ALLOWED** .....  
.....2 vs. Army, 2005

**HIGHEST FREE THROW PERCENTAGE (15 ATTEMPTS)** .....  
.....97.3% (37 of 38) vs. Richmond, 1968

**MOST POINTS IN A HALF** .....63 vs. Albright, 1997

**LARGEST VICTORY MARGIN** .....  
.....58 vs. Albright, 1997 (111-53)

**LARGEST DEFEAT MARGIN** .....  
.....61 vs. Virginia Tech, 1984 (122-61)

**MOST PERSONAL FOULS** .....37 vs. Furman, 1981

**MOST OVERTIME PERIODS** .....4 vs. The Citadel, 1967

**MOST TURNOVERS** .....41 vs. Marshall, 1984

## INDIVIDUAL

**MOST POINTS** .....  
.....42, Ron Carter vs. Long Beach State, 1978

**MOST FIELD GOALS MADE** .....  
.....16, Lewis Preston vs. W. Carolina, 1992; Bill Blair vs. Davidson, 1964 and vs. N.C. State, 1963; Norm Halberstadt vs. George Washington, 1962 and vs. Richmond, 1961

**MOST FIELD GOALS ATTEMPTED** .....  
.....39, Bill Ralph vs. West Virginia, 1954

**MOST FREE THROWS MADE** .....  
19, Gay Elmore vs. Davidson, 1986; Ron Carter vs Siena, 1978

## THE LEADERBOARD

### Top VMI Offensive Games

1. VMI 114, UNC Greensboro 91, 1979
2. VMI 113, Bluefield 83, 1987
3. VMI 113, Lynchburg 59, 1998
4. VMI 112, Radford 65, 1976  
VMI 112, Washington & Lee 67, 1996
5. VMI 111, Albright 53, 1996
6. VMI 110, Radford 103, 1996  
VMI 110, Richmond 90, 1978
7. VMI 109, George Washington 92, 1966
8. VMI 108, Salem College 84, 1976  
VMI 108, The Citadel 101, 1975  
VMI 108, Hampden-Sydney 96 (3 OT), 1960

### Top Individual Scoring Performances

1. Jason Conley, 42 vs. Western Carolina, 2002  
Ron Carter, 42 vs. Long Beach State, 1978
2. Norm Halberstadt, 41 vs. Richmond, 1961
3. Jason Conley, 38 vs. Villanova, 2002  
Jason Conley, 38 vs. East Tenn. State, 2002  
Jason Conley, 38 vs. Wofford, 2002  
Gay Elmore, 38 vs. James Madison, 1986  
John Mitchell, 38 vs. Old Dominion, 1969  
Mike Manis, 38 vs. Richmond, 1969
4. Radee Skipworth, 37 vs. Wofford, 2003  
Lewis Preston, 37 vs. The Citadel, 1993  
Gay Elmore, 37 vs. Roanoke, 1987  
Ron Carter, 37 vs. Alderson-Broadus, 1978  
Charlie Schmaus, 37 vs. East Carolina,1966  
Bill Blair, 37 vs. Davidson,1964  
Bill Ralph, 37 vs. West Virginia, 1954

### Top Individual Rebounding Performances

1. Bill Ralph, 31 vs. Hampden-Sydney, 1954
2. Steve Powers, 28 vs. Davidson,1967  
Bobby Williamson, 28 vs. Lynchburg,1955
3. Karl Klinar, 27 vs. Hampden-Sydney,1953
4. Steve Powers, 26 vs. George Washington,1967
5. Charlie Schmaus, 25 vs. The Citadel,1966
6. Steve Powers, 24 vs. East Carolina,1968
7. Chuck Cotton, 23 vs. Presbyterian,1957
8. Dave Montgomery, 22 vs. The Citadel,1975  
Steve Powers, 22 vs. George Washington,1968

**MOST FREE THROWS ATTEMPTED** .....  
.....22, Darren Sawyer vs. Marshall, 1983

**MOST REBOUNDS** .....  
.....31, by Bill Ralph vs. Hampden-Sydney, 1954

**MOST ASSISTS** .....  
.....14, Bobby Prince vs. Western Carolina, 1995

**MOST BLOCKS** .....7, Lewis Preston vs. Marshall, 1991

**MOST STEALS** .....10, Jason Bell vs. Furman, 1998

**MOST POINTS IN A HALF** .....  
.....27, John Goode vs. East Tennessee St., 1980

**BEST FIELD GOAL PERCENTAGE (10 attempts)** .....  
.....Lester Johnson, 100% (11-11) vs. Radford, 1995

**BEST FREE THROW PERCENTAGE - (13 attempts)** .....  
..100% (13 of 13), Mike Manis vs. Old Dominion, 1968;  
Robin Porter vs. West Virginia, 1965

**MOST 3-PT FIELD GOALS MADE** .....  
..7 Lawrence Gullette vs. Virginia, 1995; Ramon Williams vs. Richmond 1989 and Oral Roberts, 1988

**MOST 3-PT FIELD GOALS ATTEMPTED** .....  
.....14 Ramon Williams vs. Western Carolina, 1990

**HIGHEST 3-PT FIELD GOAL PERCENTAGE** .....  
..100% (5-5) Ramon Williams vs. Western Carolina,1989

### Top Field Goal Percentage (10 att.)

1. Lester Johnson 100% (11-11) vs. Radford, 1995
2. Gay Elmore 92.3% (12-13) vs. Bluefield, 1987
3. Ramon Williams 90.0% (9-10) vs. JMU, 1989
4. Mark Current 84.6% (11-13) vs. Marshall, 1987
5. Geoff Hinshelwood 84.6% (11-13) vs. Georgia State, 1978

### Top Free Throw Percentage (10 att.)

1. Mike Manis, 100% (13-13) vs. ODU, 1968  
Robin Parker, 100% (13-13) vs. WVU, 1965  
Bobby Prince, 100% (12-12) vs. UTC, 1995  
Gay Elmore, 100% (12-12) vs. App. State, 1989  
Gay Elmore, 100% (12-12) vs. JMU, 1985  
John Kemper, 100% (12-12) vs. Richmond, 1968

### Top Assist Performances

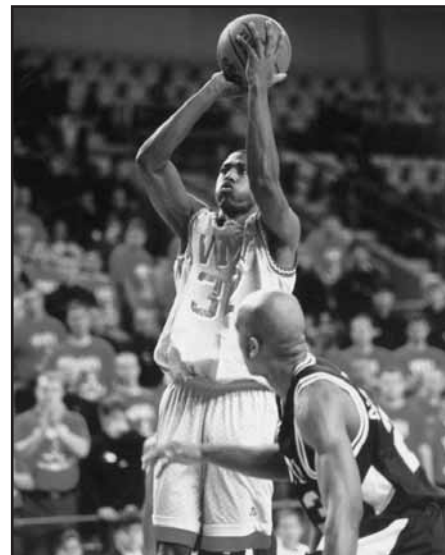
1. Bobby Prince, 14 vs. Western Carolina, 1995
2. Richard Little, 13 vs. Chattanooga, 2003  
Richard Little, 13 vs. High Point, 2004
3. Mike Huffman, 12 vs. Hampden-Sydney, 1985  
Richard Little, 12 vs. Liberty, 2003
4. Bobby Prince, 11 vs. Furman, 1996; Western Carolina, 1996; UTC, 1993; Percy Covington, 11 vs. Western Carolina,1992; and vs. The Citadel & East Tenn. State, 1990; Darryl Faulkner, 11 vs. Elon, 1998;  
Matt Coward, 11 vs. Bluefield, 2004

### Top Block Performances

1. Eric Mann, 9 vs. The Citadel, 2000
2. Lewis Preston 7 vs. Marshall, 1992
3. Eric Mann, 6 vs. Appalachian State, 2001  
Lewis Preston, 6 vs. Furman, 1993  
Lewis Preston, 6 vs. The Citadel, 1992  
Lewis Preston, 6 vs. Bluefield, 1991  
Mike Herndon, 6 vs. West Carolina, 1985

### Top Steal Performances

1. Jason Bell, 10 vs. Furman, 1998
2. Jason Conley, 8 vs. Charleston Southern, 2002  
Jason Bell, 8 vs. W&M, 1995; UNCG, 1999
3. Bobby Prince, 7 vs William & Mary, 1995  
Maurice Spencer, 7 vs W&M, 1994  
Jason Bell, 7 vs. Shenandoah, 1999



Eric Mann blocked nine shots vs. The Citadel in 2000.

# Single Season Records

All Records Since

Conference Realignment in 1953

## TEAM

<b>LONGEST WINNING STREAK</b> -	.....21 in 1977
<b>LONGEST LOSING STREAK</b> -	.....24 in 1970 & 1971
<b>LONGEST HOME COURT WINNING STREAK</b> -	.....35 (Feb. 5, 1976 - Jan. 17, 1979)
<b>MOST WINS</b> -	.....26 in 1977
<b>FEWEST WINS</b> -	.....0 in 1932 and 1944
<b>MOST POINTS</b> -	.....2,450 (32 games) 1976
<b>HIGHEST SCORING AVERAGE</b> -	.....84.2 in 1996
<b>FEWEST POINTS</b> -	.....1,137 in 1959 (18 games)
<b>LOWEST SCORING AVERAGE</b> -	.....57.4 in 2004
<b>MOST FIELD GOALS MADE</b> -	.....992 in 1976
<b>MOST FIELD GOALS ATTEMPTED</b> -	.....1958 in 1976
<b>BEST FIELD GOAL PERCENTAGE</b> -	......52.0 in 1977
<b>BEST FREE THROW PERCENTAGE</b> -	.....75.8 in 1980
<b>LOWEST FIELD GOAL PERCENTAGE</b> -	......36.0 in 1954
<b>LOWEST FREE THROW PERCENTAGE</b> -	.....58.6 in 1958
<b>MOST ASSISTS</b> -	.....445 in 2003
<b>MOST BLOCKS</b> -	.....107 in 1991
<b>MOST STEALS</b> -	.....297 in 1999
<b>BEST SCORING MARGIN</b> -	.....9.0, 1976 (76.6-67.6); 1977 (80.7-71.7)
<b>BEST REBOUND MARGIN</b> -	......6.0, 1955 (50.6-44.6)
<b>FEWEST POINTS ALLOWED PER GAME</b> -	.....60.5 in 1985
<b>MOST 3-PT FIELD GOALS MADE</b> -	.....247, 1995
<b>MOST 3-PT FIELD GOALS ATTEMPTED</b> -	.....732, 1995
<b>HIGHEST 3-PT FIELD GOAL PERCENTAGE</b> -	......44.0 (133-302) in 1989

## INDIVIDUAL

<b>MOST POINTS</b> -	.....820 by Jason Conley, 2002
<b>BEST SCORING AVERAGE</b> -	.....29.3 by Jason Conley, 2002
<b>BEST REBOUND AVERAGE</b> -	.....15.1 by Steve Powers, 1967
<b>MOST FIELD GOALS MADE</b> -	.....285 by Jason Conley, 2002
<b>MOST FIELD GOALS ATTEMPTED</b> -	.....610 by Jason Conley, 2002
<b>BEST FIELD GOAL PERCENTAGE</b> -	......65.2 by Dave Montgomery, 1977 (2nd in the nation)
<b>MOST FREE THROWS MADE</b> -	.....188 by Ron Carter, 1978
<b>MOST FREE THROWS ATTEMPTED</b> -	.....228 by Ron Carter, 1978
<b>BEST FREE THROW PERCENTAGE</b> -	......87.9% by Andy Kolesar, 1980
<b>MOST 3-PT FIELD GOALS MADE</b> -	.....79 by Jason Conley, 2002
<b>MOST 3-PT FIELD GOALS ATTEMPTED</b> -	.....237 by Jason Conley, 2002
<b>BEST 3-PT FIELD GOAL PERCENTAGE</b> -	......470 (77-264) by Ramon Williams, 1989
<b>MOST REBOUNDS</b> -	.....318 by Steve Powers, 1967
<b>MOST ASSISTS</b> -	.....216 by Richard Little, 2003
<b>MOST STEALS</b> -	.....82 by Jason Conley, 2002
<b>MOST BLOCKED SHOTS</b> -	......65 by Lewis Preston, 1992

## THE LEADERBOARD

### Top Ten Scoring Averages

		(G-Pts)	YEAR
1. Jason Conley	29.3	(28-829)	2002
2. Ron Carter	26.3	(28-736)	1978
3. Charlie Schmaus	25.9	(23-595)	1966
4. Gay Elmore	25.5	(28-713)	1987
5. John Mitchell	23.2	(23-533)	1969
6. Gay Elmore	22.8	(28-637)	1986
7. Norm Halberstadt	22.5	(22-495)	1961
8. Norm Halberstadt	22.4	(20-448)	1962
9. Damon Williams	20.7	(28-579)	1990
10. Robin Porter	20.6	(23-473)	1966

### Top Ten Rebounding Average

		(G-Rbs)	YEAR
1. Steve Powers	15.1	(21-318)	1967
2. Bill Ralph	14.3	(23-330)	1954
3. Bobby Williamson	13.7	(23-316)	1955
4. Steve Powers	13.6	(21-285)	1968
5. Charlie Schmaus	11.5	(23-265)	1966
6. Charlie Schmaus	11.2	(21-235)	1965
7. Eric Mann	10.5	(28-294)	2001
8. Dave Montgomery	10.3	(26-269)	1975
9. Joe Gedro	9.8	(20-915)	1960
10. Chuck Cotton	9.7	(23-224)	1957

### Top Ten Field Goal Percentage (Min. 3 made per game)

		(FG-FGA)	YEAR
1. Dave Montgomery	.652	(161-247)	1977
2. Matt Murrer	.650	(130-200)	2006
3. Matt Murrer	.582	(106-182)	2004
4. Dave Montgomery	.569	(116-204)	1975
5. Dave Montgomery	.563	(126-224)	1976
6. Mark Craft	.559	(109-165)	1989
7. Jeff Gausepohl	.555	(70-126)	1963
8. Jeff Gausepohl	.554	(72-130)	1965
9. Will Bynum	.549	(200-364)	1977
10. George Borojevich	.549	(90-164)	1975

### Top Ten Free Throw Percentage (Min. 2 made per game)

		(FT-FTA)	YEAR
1. Andy Kolesar	.879	(94-107)	1980
2. Andy Kolesar	.878	(79-90)	1979
3. John Krovic	.875	(70-80)	1976
4. John Mitchell	.868	(99-114)	1969
5. John Mitchell	.865	(45-52)	1967
6. John Mitchell	.864	(70-81)	1968
7. Gay Elmore	.856	(167-195)	1985
8. Bobby Prince	.855	(100-117)	1995
9. Ralph Lawson	.850	(68-80)	1959
10. Mike Manis	.849	(86-102)	1969

### Top Five Assists

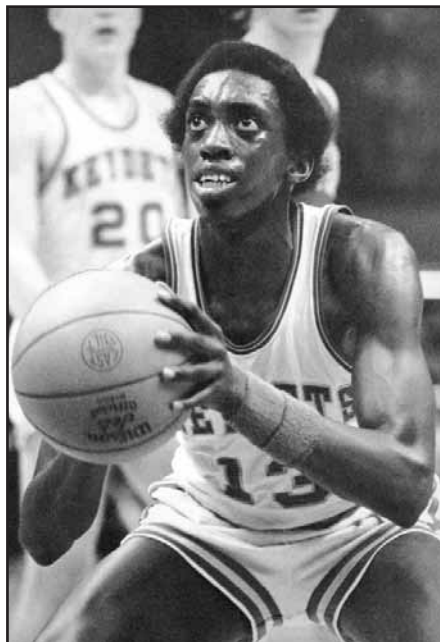
1. Richard Little	216	2003
2. Bobby Prince	173	1995
3. Richard Little	165	2004
4. Mike Huffman	164	1985
5. Bobby Prince	156	1996

### Top Five Blocks

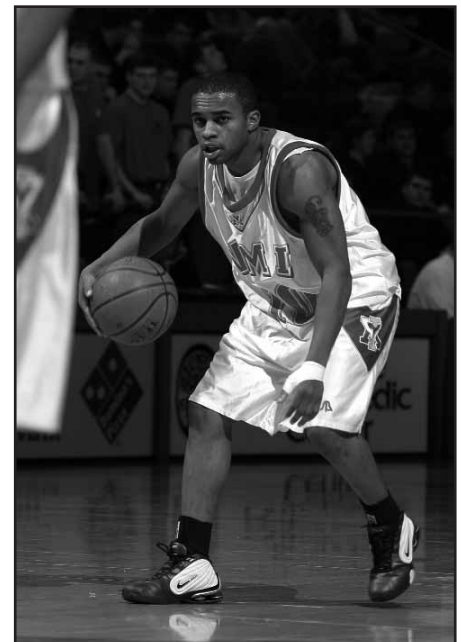
1. Lewis Preston	65	1992
2. Lewis Preston	64	1991
3. Eric Mann	58	2001
4. Eric Mann	51	2000
5. Lewis Preston	48	1993

### Top Five Steals

1. Jason Conley	82	2002
2. Jason Bell	79	1998
3. Jason Bell	77	1999
4. Bobby Prince	65	1995
5. Percy Covington	62	1990
Aaron Demory	62	2000



Ron Carter



Richard Little

# Seasonal Stat Leaders

## ■ SCORING

	G	Pts.	Avg.
1954 - Bill Ralph	23	447	19.4
1955 - Bobby Williamson	23	280	12.2
1956 - Bill Coupland	23	314	13.7
1957 - Bill Coupland	26	334	12.8
1958 - Chuck Cotton	17	226	13.3
1959 - Chuck Cotton	17	272	16.0
1960 - Norm Halberstadt	20	372	18.6
1961 - Norm Halberstadt	22	495	22.5
1962 - Norm Halberstadt	20	448	22.4
1963 - Bill Blair	21	418	19.9
1964 - Bill Blair	24	432	18.0
1965 - Joe Kruszewski	15	260	18.6
1966 - Charlie Schmaus	23	595	25.9
1967 - John Kemper	21	297	14.1
1968 - John Kemper	21	383	18.2
1969 - John Mitchell	23	533	23.2
1970 - Jan Essenburg	25	348	13.9
1971 - Jan Essenburg	26	411	15.8
1972 - Charlie Tyler	25	316	12.6
1973 - Gordie Rawlyk	26	254	9.7
1974 - John Krovic	24	345	14.4
1975 - John Krovic	26	389	15.0
1976 - Ron Carter	32	574	17.9
1977 - Ron Carter	30	613	20.4
1978 - Ron Carter	28	736	26.3
1979 - Andy Kolesar	27	399	14.8
1980 - Andy Kolesar	26	498	19.2
1981 - Andy Kolesar	27	385	14.3
1982 - Mark Vest	26	425	16.3
1983 - Cedric Wins	27	410	15.2
1984 - Gay Elmore	26	478	18.4
1985 - Gay Elmore	29	579	20.0
1986 - Gay Elmore	28	637	22.8
1987 - Gay Elmore	28	713	25.5
1988 - Damon Williams	30	488	16.3
1989 - Ramon Williams	28	523	18.7
1990 - Damon Williams	28	579	20.7
1991 - Greg Fittz	28	485	17.3
1992 - Jonathan Penn	28	539	19.3
1993 - Lewis Preston	27	450	16.7
1994 - Lawrence Gullette	24	271	11.3
1995 - Lawrence Gullette	27	442	16.4
1996 - Lawrence Gullette	28	444	15.9
1997 - Maurice Spencer	27	405	15.0
1998 - Jason Bell	27	439	16.3
1999 - Jason Bell	26	492	18.9
2000 - Nick Richardson	24	302	12.6
2001 - Eric Mann	28	377	13.5
2002 - Jason Conley	28	820	29.3
2003 - Radee Skipworth	30	558	18.6
2004 - Radee Skipworth	23	367	16.0
2005 - Reggie Williams	27	419	15.5
2006 - Reggie Williams	27	514	19.0

## ■ REBOUNDING AVERAGE

	G	Rbs.	Avg.
1954 - Bill Ralph	23	330	14.3
1955 - Bobby Williamson	23	316	13.7
1956 - Bill Coupland	23	181	7.9
1957 - Chuck Cotton	23	224	9.7
1958 - Chuck Cotton	17	152	8.9
1959 - Chuck Cotton	17	135	7.9
1960 - Joe Gedro	20	195	9.8
1961 - Frank Oley	21	163	7.8
1962 - Bobby Watson	20	181	9.1
1963 - John Yurachek	20	180	9.0
1964 - Bobby Watson	24	218	9.1
1965 - Charlie Schmaus	21	235	11.2
1966 - Charlie Schmaus	23	265	11.5
1967 - Steve Powers	21	318	15.1
1968 - Steve Powers	21	285	13.6
1969 - Denny Clark	23	174	7.6
1970 - Fred Allison	25	184	7.4

1971 - Jan Essenburg	26	168	6.5
1972 - Bob Frank	25	203	8.1
1973 - Charlie Tyler	26	177	6.8
1974 - Charlie Tyler	24	159	6.6
1975 - Dave Montgomery	26	269	10.3
1976 - Dave Montgomery	32	265	8.3
1977 - Dave Montgomery	30	267	8.9
1978 - Dave Montgomery	28	267	9.5
1979 - John Goode	24	139	5.8
1980 - John Goode	27	203	7.5
1981 - Geoff Hinshelwood	26	156	6.0
1982 - Mark Vest	26	155	6.0
1983 - Darren Sawyer	25	124	5.0
1984 - Gay Elmore	26	148	5.7
1985 - Darren Sawyer	30	157	5.2
1986 - Mark Current	27	166	6.1
1987 - Mark Current	28	214	7.6
1988 - Bobby Gardner	30	202	6.7
1989 - Mark Craft	28	234	8.4
1990 - Mark Craft	29	249	8.6
1991 - Greg Fittz	28	190	6.8
1992 - Lewis Preston	27	205	7.6
1993 - Lewis Preston	27	193	7.1
1994 - Jonathan Goodman	28	237	8.5
1995 - Lawrence Gullette	27	175	6.5
1996 - Brent Conley	28	236	8.4
1997 - Eric Mann	25	113	4.8
1998 - Eric Mann	26	191	7.3
1999 - Aaron Demory	26	164	6.3
2000 - Eric Mann	29	229	7.9
2001 - Eric Mann	28	294	10.5
2002 - Jason Conley	28	224	8.0
2003 - Radee Skipworth	30	173	5.8
2004 - Radee Skipworth	23	143	6.2
2005 - Preston Beverly	27	138	5.1
2006 - Matt Murrer	27	212	7.9

## ■ FG PERCENTAGE

(Minimum - 3 made per game)

		(FG-FGA)
1954 - Karl Klinar	.413	(83-161)
1955 - Bobby Williamson	.466	(83-178)
1956 - Bill Coupland	.432	(115-266)
1957 - Ralph Lawson	.456	(104-228)
1958 - Chuck Cotton	.405	(90-222)
1959 - Chuck Cotton	.410	(99-239)
1960 - Roy Quinn	.431	(98-227)
1961 - John Yurachek	.506	(41-81)
1962 - John Yurachek	.475	(76-160)
1963 - Jeff Gausepohl	.555	(70-126)
1964 - Jeff Gausepohl	.546	(70-128)
1965 - Jeff Gausepohl	.554	(72-130)
1966 - John Hartung	.470	(73-155)
1967 - John Mitchell	.435	(117-269)
1968 - John Mitchell	.459	(134-292)
1969 - John Mitchell	.483	(217-449)
1970 - Jim Gillespie	.479	(80-167)
1971 - Jim Sefick	.452	(118-261)
1972 - David Lester	.466	(88-189)
1973 - David Lester	.511	(92-180)
1974 - John Krovic	.488	(156-320)
1975 - Dave Montgomery	.569	(116-204)
1976 - Dave Montgomery	.563	(126-224)
1977 - Dave Montgomery	.652	(161-247)
1978 - Ron Carter	.532	(274-515)
1979 - Marty Cristo	.520	(53-102)
1980 - Andy Kolesar	.544	(202-371)
1981 - John Goode	.532	(109-205)
1982 - Mark Vest	.469	(168-358)
1983 - Cedric Wins	.450	(158-351)
1984 - Cedric Wins	.477	(133-279)
1985 - Cedric Wins	.521	(188-361)
1986 - Darrin McDonald	.484	(177-366)
1987 - Mark Current	.542	(173-319)
1988 - Lennon Mings	.514	(91-177)
1989 - Mark Craft	.559	(109-195)

1990 - Percy Covington	.516	(83-161)
1991 - Lewis Preston	.515	(85-165)
1992 - Lewis Preston	.545	(189-347)
1993 - Lewis Preston	.504	(177-351)
1994 - Jonathan Goodman	.493	(113-229)
1995 - Bobby Prince	.439	(94-214)
1996 - Lester Johnson	.514	(91-177)
1997 - Maurice Spencer	.444	(144-324)
1998 - Aaron Demory	.488	(103-211)
1999 - Jason Bell	.467	(179-383)
2000 - Aaron Demory	.520	(130-250)
2001 - Eric Mann	.516	(130-252)
2002 - Radee Skipworth	.473	(151-319)
2003 - Radee Skipworth	.463	(208-449)
2004 - Matt Murrer	.582	(106-182)
2005 - Reggie Williams	.431	(134-357)
2006 - Matt Murrer	.650	(130-200)

## ■ FT PERCENTAGE

(Minimum - 2 made per game)

		(FT-FTA)
1954 - Don Colwell	.730	(68-92)
1955 - Frank Walter	.826	(53-64)
1956 - Don Nyman	.714	(70-98)
1957 - Dave Goode	.708	(75-106)
1958 - Roy Quinn	.651	(41-63)
1959 - Ralph Lawson	.850	(68-80)
1960 - Roy Quinn	.776	(52-67)
1961 - Norm Halberstadt	.753	(95-126)
1962 - Gene Lazaroff	.791	(38-48)
1963 - Bill Blair	.821	(82-101)
1964 - Jeff Gausepohl	.768	(93-121)
1965 - John Prosser	.795	(62-78)
1966 - Robin Porter	.816	(129-158)
1967 - John Mitchell	.865	(45-52)
1968 - John Mitchell	.864	(70-81)
1969 - John Mitchell	.868	(99-114)
1970 - Jerry Renfro	.728	(83-114)
1971 - Jerry Renfro	.791	(53-67)
1972 - David Lester	.770	(47-61)
1973 - Steve Chapin	.806	(50-62)
1974 - Will Bynum	.738	(48-65)
1975 - Will Bynum	.808	(59-73)
1976 - John Krovic	.875	(70-80)
1977 - Will Bynum	.767	(115-150)
1978 - Ron Carter	.825	(188-228)
1979 - Andy Kolesar	.878	(79-90)
1980 - Andy Kolesar	.879	(94-107)
1981 - Andy Kolesar	.805	(66-82)
1982 - Mark Vest	.793	(88-111)
1983 - Cedric Wins	.750	(75-100)
1984 - Gay Elmore	.821	(151-184)
1985 - Gay Elmore	.856	(167-195)
1986 - Gay Elmore	.828	(173-209)
1987 - Gay Elmore	.763	(158-207)
1988 - Damon Williams	.817	(76-93)
1989 - Damon Williams	.802	(93-116)
1990 - Ramon Williams	.824	(70-85)
1991 - Erek Perry	.745	(82-110)
1992 - Jonathan Penn	.777	(129-166)
1993 - Lewis Preston	.800	(96-120)
1994 - Jonathan Goodman	.640	(71-111)
1995 - Bobby Prince	.855	(100-117)
1996 - Bobby Prince	.838	(93-111)
1997 - Maurice Spencer	.779	(60-77)
1998 - Darryl Faulkner	.812	(69-85)
1999 - Jason Bell	.734	(102-139)
2000 - Nick Richardson	.614	(70-114)
2001 - Eric Mann	.597	(117-196)
2002 - Jason Conley	.818	(171-209)
2003 - Radee Skipworth	.665	(109-164)
2004 - Radee Skipworth	.713	(77-108)
2005 - Reggie Williams	.796	(78-98)
2006 - Reggie Williams	.750	(126-168)

# Career Records

## OVERALL RECORDS

<b>MOST POINTS</b> -	.....2,423, Gay Elmore, 1984-87
<b>MOST FIELD GOALS MADE</b> -	.....873, Gay Elmore, 1984-87
<b>MOST FIELD GOALS ATTEMPTED</b> -	.....1,858, Gay Elmore, 1984-87
<b>BEST FIELD GOAL PERCENTAGE</b> -	.....58.0% (528 of 911), Dave Montgomery, 1975-78
<b>MOST 3 PT FIELD GOALS MADE</b> -	.....206, Ramon Williams, 1987-1990
<b>MOST 3 PT FIELD GOALS ATTEMPTED</b> -	.....482, Ramon Williams, 1987-1990
<b>BEST 3 PT. FIELD GOAL PERCENTAGE</b> -	.....42.7% (206-482) Ramon Williams, 1987-1990
<b>MOST FREE THROWS MADE</b> -	.....495, Gay Elmore, 1984-87
<b>MOST FREE THROWS ATTEMPTED</b> -	.....671 Ron Carter, 1975-78
<b>BEST FREE THROW PERCENTAGE</b> -	.....86.6% (214 of 247), John Mitchell, 1967-69
<b>BEST SCORING AVERAGE</b> -	.....21.4, Gay Elmore, 1984-87
<b>MOST REBOUNDS</b> -	.....1,068 by Dave Montgomery, 1975-78
<b>MOST ASSISTS</b> -	.....608, Richard Little, 2001-04
<b>MOST BLOCKS</b> -	.....202, Lewis Preston, 1990-93
<b>MOST STEALS</b> -	.....240, Jason Bell, 1995-99
<b>MOST CONSECUTIVE FREE THROWS MADE</b> -	.....31, Gay Elmore, 1983-84
<b>MOST GAMES IN DOUBLE FIGURES</b> -	.....110, Gay Elmore, 1984-87
<b>MOST CONSECUTIVE GAMES OF 20 POINTS OR MORE</b> -	.....19, Ron Carter, 1978



Gay Elmore ranks first in career scoring with 2,423 points.

## THE LEADERBOARD

### 1,000 Point Club

1. Gay Elmore	2,423	1984-87
2. Ron Carter	2,228	1975-78
3. Ramon Williams	1,630	1987-90
4. Damon Williams	1,622	1987-90
5. Will Bynum	1,606	1974-77
6. Radee Skipworth	1,588	2001-04
7. John Krovic	1,555	1974-77
8. Cedric Wins	1,488	1982-85
9. Andy Kolesar	1,469	1978-81
10. Lawrence Gullette	1,367	1992-96
11. Jason Bell	1,365	1996-99
12. Dave Montgomery	1,329	1975-78
13. Charlie Schmaus*	1,328	1964-66
14. Norm Halberstadt*	1,315	1960-62
15. Dennis Johnson	1,256	1978-81
16. Darren Sawyer	1,221	1982-85
17. Bill Ralph*	1,175	1952-54
18. Jonathan Penn	1,153	1990-93
19. John Mitchell*	1,150	1967-69
20. Lewis Preston	1,146	1990-93
21. Darryl Faulkner	1,121	1994-98
22. John Goode	1,096	1978-81
23. Karl Klinar*	1,078	1952-54
24. Nick Richardson	1,074	1998-2001
25. Aaron Demory	1,069	1997-2000
26. Jason Conley	1,042	2001-03
27. Maurice Spencer	1,039	1994-97
28. Bill Blair*	1,023	1962-64
29. Greg Fittz	1,006	1988-91

### Top Ten Scoring Averages

1. Gay Elmore	21.4	1984-87
2. Norm Halberstadt	21.2	1960-62
3. Charlie Schmaus*	19.5	1964-66
4. Ron Carter	19.2	1975-78
5. John Mitchell	17.7	1967-69
6. Bill Blair*	17.3	1962-64
7. Reggie Williams	17.3	2004-06
8. Bill Ralph*	16.5	1952-54
9. Karl Klinar*	16.1	1952-54
10. Robin Porter	15.6	1965-66

### Top Ten Total Rebounds

1. Dave Montgomery	1,068	1975-78
2. Bill Ralph*	919	1952-54
3. Eric Mann	841	1997-2001
4. Ron Carter	809	1975-78
5. Karl Klinar*	760	1952-54
6. Charlie Schmaus*	715	1964-66
7. Steve Powers*	675	1966-68
8. Chuck Cotton	661	1956-59
9. Mark Craft	650	1978-81
10. Will Bynum	640	1974-77

### Top Ten Rebounding Averages

1. Bill Ralph*	12.9	1952-54
2. Karl Klinar*	11.3	1952-54
3. Steve Powers*	10.9	1966-68
4. Charlie Schmaus*	10.5	1964-66
5. Dave Montgomery	9.2	1975-78
6. Bill Coupland*	8.8	1955-57
7. Chuck Cotton	8.4	1956-59
8. Bobby Watson*	8.4	1962-64
9. Eric Mann	7.7	1997-2001
10. Denny Clark*	7.5	1967-69

### Top Five Assists

1. Richard Little	608	2001-04
2. Mike Huffman	480	1983-86
3. Bobby Prince	452	1993-96
4. Percy Covington	432	1989-92
5. Kelly Lombard	383	1976-79

### Top Five Blocks

1. Lewis Preston	202	1990-93
2. Eric Mann	184	1997-2001
3. Tim Allmond	110	2002-05
4. Mike Herndon	103	1982-85
5. Dave Montgomery+	84	1975-78

### Top Five Steals

1. Jason Bell	240	1995-99
2. Percy Covington	196	1989-92
3. Richard Little	168	2001-04
4. Bobby Prince	157	1993-96
5. Andy Kolesar	150	1978-81

### Top Five Field Goal Percentage

1. Dave Montgomery	.580	1975-78
2. Matt Murrer	.569	2003-06
3. Jeff Gausepohl*	.552	1963-65
4. Will Bynum	.528	1974-77
5. George Borejevich	.526	1974-77

### Top Five Free Throw Percentage

1. John Mitchell*	.866	1967-69
2. Andy Kolesar	.849	1978-81
3. Bobby Prince	.841	1993-96
4. Mike Manis	.837	1968-69
5. Gay Elmore	.816	1984-87

### Top Ten Double-Figure Scoring Games

1. Gay Elmore	110	1984-87
2. Ron Carter	99	1975-78
3. Cedric Wins	89	1982-85
4. John Krovic	85	1974-77
5. Radee Skipworth	85	2001-04
6. Will Bynum	84	1974-77
7. Damon Williams	82	1987-90
8. Ramon Williams	81	1987-90
9. Lawrence Gullette	75	1993-96
10. Andy Kolesar	73	1978-81

### Top Ten 20+ Point Scoring Games

1. Gay Elmore	68	1984-87
2. Ron Carter	60	1975-78
3. Jason Conley	34	2001-03
4. Norm Halberstadt*	32	1960-62
5. Damon Williams	32	1987-90
6. Ramon Williams	30	1987-90
7. Bill Blair*	27	1962-64
8. Charlie Schmaus*	27	1964-66
9. John Mitchell*	27	1967-69
10. Will Bynum	25	1974-77

### Top Ten 30+ Point Scoring Games

1. Gay Elmore	15	1984-87
2. Jason Conley	12	2001-02
3. Norm Halberstadt*	10	1960-62
4. Charlie Schmaus*	10	1964-66
5. Ron Carter	9	1975-78
6. Ramon Williams	6	1987-90
7. Andy Kolesar	5	1978-81
8. Bill Blair*	4	1962-64
9. John Mitchell*	4	1967-69
10. Damon Williams	4	1987-90

### Top Ten Consecutive Double-Figure Games

1. Damon Williams	63	1988-90
2. Gay Elmore	50	1986-87
3. Jason Conley	37	2001-02
4. Gay Elmore	34	1984-85
5. Ron Carter	33	1976-77
6. Ramon Williams	31	1988-89
7. Ron Carter	30	1977-78
8. John Mitchell	29	1967-68
9. Jason Bell	28	1998-99
10. Jonathan Penn	27	1990-93

\* 3 year career, all others as indicated  
+ statistics incomplete for 1974-75 season

# Cameron Hall Records

## ■ TEAM

**MOST POINTS:** .....113, VMI vs Bluefield, Jan. 21, 1987; VMI vs. Lynchburg, Dec. 20, 1997

**FEWEST POINTS:** .....32, VMI vs Coastal Carolina, Jan. 26, 2004

**MOST POINTS TWO TEAMS:** .....213, VMI 110 Radford 103, Dec. 2, 1995

**FEWEST POINTS TWO TEAMS:** .....81, Coastal Carolina 49 VMI 32, Jan. 26, 2004

**MOST FIELD GOALS MADE:** .....45, East Tennessee State vs VMI, Feb. 6, 1982

**FEWEST FIELD GOALS MADE:** .....10, VMI vs. Coastal Carolina, Jan. 26, 2004

**MOST 3-PT FIELD GOALS MADE:** .....17, Marshall vs VMI, Jan. 16, 1995; VMI vs. Shenandoah, Nov. 25, 1992

**MOST 3-PT FIELD GOALS ATTEMPTED:** .....40, Birmingham-Southern vs. VMI, Feb. 4, 2006

**MOST FREE THROWS MADE:** .....37, VMI vs Marshall, Feb. 17, 1996; VMI vs Radford, Dec. 2, 1995

**MOST FREE THROWS ATTEMPTED:** .....51, VMI vs Radford, Dec. 2, 1995

**MOST FREE THROWS MADE TWO TEAMS:** .....54, VMI vs Radford, Dec. 2, 1995; VMI vs Marshall, Feb. 21, 1983

**MOST FREE THROWS ATTEMPTED TWO TEAMS:** .....76, VMI vs High Point, Jan. 12, 2006

**FEWEST FREE THROWS MADE:** .....1, Army vs VMI, Nov. 21, 2005

**FEWEST FREE THROWS ATTEMPTED:** .....2, VMI vs Roanoke, Dec. 9, 1987; Army vs. VMI, Nov. 21, 2005

**MOST PERSONAL FOULS:** .....38, Averett vs VMI, Dec. 7, 1983

**MOST PERSONAL FOULS TWO TEAMS:** .....55, VMI vs Bridgewater, Dec. 5, 1983; 55, VMI vs Averett, Dec 7, 1983; VMI vs. High Point, Jan. 12, 2006

**MOST OVERTIME PERIODS:** .....3, VMI vs Furman, Jan. 21, 1989

**BEST FIELD GOAL PERCENTAGE:** .....71.1%, Davidson vs VMI, Mar. 3, 1983

**BEST 3-PT FIELD GOAL PERCENTAGE:** .....87.5%, VMI (7-for-8) vs W. Carolina, Feb. 13, 1989

**BEST FREE THROW PERCENTAGE:** .100%, (16-for-16) Richmond vs VMI, Feb. 2, 1989

**MOST REBOUNDS:** .....66, VMI vs. Warren Wilson, Nov. 20, 1999

**MOST ASSISTS:** .....30, VMI vs. Eastern Mennonite, Dec. 14, 1992

**MOST STEALS:** .....25, VMI vs. Bluefield, Dec. 1, 1992

**MOST BLOCKED SHOTS:** .....10, VMI vs Bluefield, Jan. 22, 1992

**HIGHEST SCORING HALF:** .....63, VMI vs. Albright, Nov. 22, 1996

**LOWEST SCORING HALF:** .....13, Southern Virginia vs. VMI, Nov. 22, 2004

**FEWEST TURNOVERS:** .....5, VMI vs William & Mary, Feb. 11 1987; VMI vs The Citadel, Feb. 7, 1987; Western Carolina vs VMI, Jan. 25, 1986; VMI vs The Citadel, Feb. 25, 1985; VMI vs William & Mary, Feb. 6, 1985

**FIRST NIGHT AT CAMERON HALL:**  
VMI vs. Fifth-Ranked Virginia,  
Dec. 5, 1981

## ■ INDIVIDUAL

**MOST POINTS:** .....40, Ramsey Yeatts (Bridgewater) Nov. 30, 1987

**MOST FIELD GOALS MADE:** .....17, Ramsey Yeatts (Bridgewater) Nov. 30, 1987

**MOST FIELD GOALS ATTEMPTED:** .....29, Gay Elmore (VMI) vs. UTC, Feb. 14, 1987

**MOST 3-PT. FIELD GOALS MADE:** .....10, Shawn Moore (Marshall) vs VMI, Jan. 16, 1995

**MOST 3-PT FIELD GOALS ATTEMPTED:** .....23, Shawn Moore (Marshall) vs VMI, Jan. 16, 1995

**MOST FREE THROWS MADE:** .....19, Gay Elmore (VMI) Feb. 24, 1986 vs Davidson

**MOST FREE THROWS ATTEMPTED:** .....20, Gay Elmore (VMI) Feb. 24, 1986 vs Davidson

**BEST FIELD GOAL PERCENTAGE:** .....100%, (8-for-8) Charles Jones (Marshall) Feb. 11, 1982

**BEST 3-PT FIELD GOAL PERCENTAGE:** .....100%, (5-for-5) Ramon Williams (VMI) vs Western Carolina, Feb. 13, 1989

**BEST FREE THROW PERCENTAGE:** .....100%, (12-for-12) Gerry Born (Davidson) Jan. 21, 1985

**MOST REBOUNDS:** .....20, Lewis Preston (VMI) vs Bluefield, Jan. 22, 1992;

**MOST ASSISTS:** .....12, Mike Huffman (VMI) vs Hampden-Sydney, Dec. 8, 1984

**MOST STEALS:** .....10, Jason Bell (VMI) vs. Furman, Feb. 10, 1998

**MOST BLOCKED SHOTS:** .....9, Eric Mann vs. The Citadel, Jan. 15, 2000

**HIGHEST SCORING HALF:** .....26, Gay Elmore (VMI) vs Davidson, Feb. 24, 1986

## ■ CAMERON HALL FACTS

**YEAR OPENED:** .....1981

**RESULTS OF FIRST GAME:** ..... VMI 49 Virginia 76, Dec. 5, 1981 (Attn. 4,460)

**FIRST VMI VICTORY:** .....VMI 67 Appalachian St. 62 (OT) Jan. 30, 1982

**FIRST VMI DEFEAT:** .....VMI 49, Virginia 76, Dec. 5, 1981 (Attn. 4,460)

**LARGEST HOME CROWDS:** ...4,950 - Dec. 15, 1997 (North Carolina 105, VMI 61)

.....4,460 - Dec. 5, 1981 (Virginia 76, VMI 49)

.....4,140 - Nov. 28, 1995 (VMI 100, Washington & Lee 62)

.....4,109 - Dec. 4, 2001 (Virginia 89, VMI 70)

.....3,975 - Feb. 19, 1996 (Davidson 95, VMI 76)

.....3,878 - Feb. 17, 1996 (VMI 103, Marshall 94)

.....3,724 - Dec. 5, 2003 (Virginia 78, VMI 56)

.....3,643 - Dec. 6, 1999 (Virginia Tech 65, VMI 46)

.....3,520 - Feb. 7, 1990 (VMI 77, The Citadel 76)

.....3,400 - Feb. 19, 1986 (Virginia Tech 88, VMI 73)

**ALL-TIME ARENA RECORD:** .....164-153 (.517) - 25 seasons



# Coaching Records

Year	Coach	Won-Lost	Points Scored	Points Against	Year	Coach	Won-Lost	Points Scored	Points Against
1908-09	Pete Krebs	3-3	135	116	1958-59	L.F. Miller	5-13	1137	1311
1909-10	F.J. Pratt	2-5	146	226	1959-60	L.F. Miller	4-16	1467	1643
1910-11	J. Mitchell	3-5	140	222	1960-61	L.F. Miller	5-16	1694	1784
1911-12	Alpha Brummage	6-5	280	238	1961-62	L.F. Miller	9-11	1469	1559
1912-13	Alpha Brummage	8-4	340	224	1962-63	L.F. Miller	6-15	1552	1644
1913-14	W.C. Rafferty	6-6	311	251	1963-64	L.F. Miller	12-12	1779	1853
1914-15	F.H. Gaoton	8-2	269	189	1964-65	Gary McPherson	8-13	1560	1612
1915-16	F.H. Gaoton	9-3	440	269	1965-66	Gary McPherson	5-18	1782	1880
1916-17	F.H. Gaoton	9-5	465	349	1966-67	Gary McPherson	5-16	1558	1672
1917-18	E.C. Abell	6-6	402	310	1967-68	Gary McPherson	9-12	1565	1637
1918-19	E.C. Abell	8-6	515	316	1968-69	Gary McPherson	5-18	1725	1874
1919-20	Pinky Spruhan	11-1	481	188	1969-70	Mike Schuler	6-19	1605	1905
1920-21	Pinky Spruhan	16-1	749	305	1970-71	Mike Schuler	1-25	1626	2125
1921-22	Pinky Spruhan	11-7	549	439	1971-72	Mike Schuler	6-19	1663	2071
1922-23	W.C. Rafferty	8-6	295	247	1972-73	Bill Blair	7-19	1623	2123
1923-24	W.C. Rafferty	9-5	329	293	1973-74	Bill Blair	6-18	1594	1685
1924-25	W.C. Rafferty	6-5	248	239	1974-75	Bill Blair	13-13	2104	2061
1925-26	W.C. Rafferty	7-8	395	367	1975-76	Bill Blair	22-10	2450	2164
1926-27	W.C. Rafferty	3-12	354	422	1976-77	Charlie Schmaus	26-4	2421	2152
1927-28	W.C. Rafferty	7-6	417	370	1977-78	Charlie Schmaus	21-7	2247	2067
1928-29	W.C. Rafferty	6-7	392	378	1978-79	Charlie Schmaus	12-15	2041	2154
1929-30	W.C. Rafferty	4-10	386	444	1979-80	Charlie Schmaus	11-16	1969	2043
1930-31	W.C. Rafferty	7-12	408	497	1980-81	Charlie Schmaus	4-23	1743	2083
1931-32	W.C. Rafferty	0-14	289	458	1981-82	Charlie Schmaus	1-25	1606	2185
1932-33	W.C. Rafferty	4-11	362	496	1982-83	Marty Fletcher	2-25	1586	1994
1933-34	W.C. Rafferty	4-10	335	452	1983-84	Marty Fletcher	8-19	1640	1862
1934-35	Frank Summers	3-14	570	738	1984-85	Marty Fletcher	16-14	1863	1816
1936-37	Pooley Hubert	6-11	571	647	1985-86	Marty Fletcher	11-17	2004	2081
1937-38	J. Elmore	4-11	414	511	1986-87	Joe Cantafio	11-17	1991	2122
1938-39	Jimmy Walker	7-10	600	664	1987-88	Joe Cantafio	13-17	2080	2188
1939-40	Jimmy Walker	3-12	461	590	1988-89	Joe Cantafio	11-17	2138	2132
1940-41	Jimmy Walker	10-6	625	595	1989-90	Joe Cantafio	14-15	2239	2224
1941-42	Jimmy Walker	7-11	711	727	1990-91	Joe Cantafio	10-18	1997	2167
1942-43	Pooley Hubert	8-8	627	633	1991-92	Joe Cantafio	10-18	1927	2060
1943-44	Joe Daher	0-14	380	620	1992-93	Joe Cantafio	5-22	1785	2058
1944-45	Joe Daher	2-10	360	531	1993-94	Joe Cantafio	5-23	1891	2131
1945-46	Jay McWilliams	1-10	286	519	1994-95	Bart Bellairs	10-17	2154	2370
1946-47	Lloyd Roberts	4-15	934	1091	1995-96	Bart Bellairs	18-10	2358	2228
1947-48	Frank Summers	3-17	941	1128	1996-97	Bart Bellairs	12-16	2170	2180
1948-49	Frank Summers	3-16	937	1213	1997-98	Bart Bellairs	14-13	2037	2022
1949-50	Bill O'Hara	4-17	1198	1477	1998-99	Bart Bellairs	12-15	1897	2020
1950-51	Bill O'Hara	3-18	1218	1471	1999-2000	Bart Bellairs	6-23	2064	2247
1951-52	Bill O'Hara	3-21	1417	1795	2000-01	Bart Bellairs	9-19	1905	2039
1952-53	Chuck Noe	5-19	1549	1852	2001-02	Bart Bellairs	10-18	2141	2300
1953-54	Chuck Noe	11-12	1683	1667	2002-03	Bart Bellairs	10-20	1952	2147
1954-55	Chuck Noe	8-15	1619	1821	2003-04	Bart Bellairs	6-22	1608	1942
1955-56	Jack Null	4-19	1579	1882	2004-05	Bart Bellairs	9-18	1748	1893
1956-57	Jack Null	4-22	1769	2106	2005-06	Duggar Baucom	7-20	1924	2053
1957-58	Jack Null	4-17	1357	1698					

# Coaching Records

<i>Name (Years)</i>	<i>Overall</i>	<i>Pct.</i>	<i>Home</i>	<i>Away</i>	<i>Neutral</i>
Pete Krebs (1908-09)	3-3	.500	3-2	0-1	0-0
F.J. Pratt (1909-10)	2-5	.286	2-3	0-2	0-0
J. Mitchell (1910-11)	3-5	.375	2-4	1-1	0-0
Alpha Brummage (1911-13)	14-9	.609	11-5	3-4	0-0
W.C. Raferty (1913-14, 1922-34)	68-112	.378	58-58	9-47	1-7
F.H. Gaoton (1914-17)	26-10	.722	25-4	1-4	0-2
E.C. Abell (1917-1919)	14-12	.538	12-7	1-4	1-1
Pinky Spruhan (1919-22)	38-9	.809	30-2	3-6	5-1
Frank Summers (1934-35, 1947-49)	12-61	.164	10-29	2-31	0-1
Pooley Hubert (1936-37, 1942-43)	14-19	.424	7-9	6-9	1-1
J. Elmore (1937-38)	4-11	.267	2-7	2-4	0-0
Jimmy Walker (1938-42)	27-39	.409	17-14	9-18	1-7
Joe Daher (1943-45)	2-24	.077	2-9	0-13	0-2
Jay McWilliams (1945-46)	1-10	.091	1-4	0-6	0-0
Lloyd Roberts (1946-47)	4-15	.211	4-8	0-7	0-0
Bill O'Hara (1949-52)	10-56	.152	5-24	5-32	0-0
Chuck Noe (1952-55)	24-46	.343	17-14	7-30	0-2
Jack Null (1955-58)	12-58	.171	8-20	4-31	0-7
L.F. Miller (1958-64)	41-84	.328	22-24	14-49	5-11
Gary McPherson (1964-69)	32-77	.294	22-17	7-42	3-18
Mike Schuler (1969-72)	13-63	.171	11-22	0-30	2-11
Bill Blair (1972-76)	48-60	.444	32-21	8-28	8-11
Charlie Schmaus (1976-82)	75-90	.455	43-34	19-42	13-14
Marty Fletcher (1982-86)	37-75	.330	30-32	5-40	2-3
Joe Cantafio (1986-94)	79-147	.350	56-45	17-86	6-16
Bart Bellairs (1994-2005)	116-191	.378	80-60	30-117	6-16
Duggar Baucom (2005-06)	7-20	.259	5-9	2-11	0-0



## Most Coaching Wins

1. Bart Bellairs	116
2. Joe Cantafio	79
3. Charlie Schmaus	75
4. W.C. Raferty	68
5. Bill Blair	48

## Best Win Percentage

(Minimum 100 games)

1. Charlie Schmaus	.455
2. Bill Blair	.444
3. Bart Bellairs	.378
4. W.C. Raferty	.378
5. Joe Cantafio	.350



## Most Games Coached

1. Bart Bellairs	307
2. Joe Cantafio	226
3. W.C. Raferty	180
4. Charlie Schmaus	165
5. L.F. Miller	125

## Most Seasons Coached

1. W.C. Raferty	13
2. Bart Bellairs	11
3. Joe Cantafio	8
4. Charlie Schmaus	6
4. L.F. Miller	6



# Home and Away Records

	Home W- L	Away W-L	Neutral W-L
2005-06	5-9	2-11	0-0
2004-05	6-7	3-11	0-0
2003-04	6-6	0-13	0-3
2002-03	5-7	2-11	3-2
2001-02	7-5	3-11	0-2
2000-01	7-6	2-12	0-1
1999-2000	5-9	0-12	1-2
1998-99	8-5	4-9	0-1
1997-98	9-4	5-8	0-1
1996-97	7-5	4-10	1-1
1995-96	12-1	5-8	1-1
1994-95	8-5	2-11	0-1
1993-94	4-9	0-13	1-1
1992-93	3-8	1-12	1-2
1991-92	6-7	4-8	0-3
1990-91	6-5	4-10	0-3
1989-90	11-1	1-11	2-3
1988-89	9-4	2-11	0-2
1987-88	8-6	3-10	2-1
1986-87	9-5	2-11	0-1
1985-86	9-6	2-9	0-2
1984-85	12-5	2-8	2-1
1983-84	7-7	1-12	0-0
1982-83	2-14	0-11	0-0
1981-82	1-9	0-14	0-2
1980-81	1-10	3-10	0-3
1979-80	7-8	4-8	0-0
1978-79	9-7	3-5	0-3
1977-78	11-0	<b>6-3</b>	4-4
1976-77	<b>14-0</b>	3-2	<b>9-3</b>
1975-76	12-1	4-6	6-3
1974-75	9-6	3-4	1-3
1973-74	5-8	1-7	0-3
1972-73	6-6	0-11	1-2
1971-72	5-7	0-10	1-2
1970-71	1-10	0-10	0-5
1969-70	5-5	0-10	1-4
1968-69	4-4	1-8	0-6
1967-68	7-2	2-8	0-2
1966-67	3-6	1-7	1-3
1965-66	4-3	1-9	0-6
1964-65	4-2	2-10	2-1
1963-64	6-2	2-10	3-1
1962-63	4-5	2-9	0-1
1961-62	4-2	3-7	2-2
1960-61	3-4	2-9	0-4
1959-60	2-6	2-7	0-3
1958-59	3-5	2-8	0-0
1957-58	3-6	1-10	0-1
1956-57	4-7	0-12	0-3
1955-56	1-7	3-9	0-3
1954-55	6-4	2-10	0-1
1953-54	8-3	3-8	0-1
1952-53	3-7	2-12	0-0
1951-52	1-7	2-14	0-0
1950-51	2-10	1-8	0-0
1949-50	2-7	2-10	0-0
1948-49	2-7	1-9	0-0
1947-48	3-7	0-9	0-1
1946-47	4-8	0-7	0-0
1945-46	1-4	0-6	0-0
1944-45	2-3	0-6	0-1
1943-44	0-6	0-7	0-1

	Home W- L	Away W-L	Neutral W-L
1942-43	4-3	4-4	0-1
1941-42	5-4	2-6	0-1
1940-41	5-2	4-3	1-1
1939-40	3-5	0-5	0-2
1938-39	4-3	3-4	0-3
1937-38	2-7	2-4	0-0
1936-37	3-6	2-5	1-0
1935-36	3-8	0-6	0-0
1934-35	2-7	1-7	0-0
1933-34	3-4	1-6	0-0
1932-33	4-5	0-6	0-0
1931-32	0-8	0-6	0-0
1930-31	4-6	0-6	0-0
1929-30	4-6	0-4	0-0
1928-29	6-3	0-4	0-0
1927-28	6-4	1-1	0-1
1926-27	3-8	0-3	0-1
1925-26	5-5	2-2	0-1
1924-25	5-2	1-2	0-1
1923-24	7-3	1-1	1-1
1922-23	5-4	3-0	0-2
1921-22	10-2	1-4	0-1
1920-21	12-0	1-1	3-0
1919-20	8-0	1-1	2-0
1918-19	7-3	1-2	0-1
1917-18	5-4	0-2	1-0
1916-17	9-2	0-3	0-0
1915-16	8-2	1-1	0-0
1914-15	8-0	0-0	0-2
1913-14	5-3	1-0	0-3
1912-13	6-1	2-3	0-0
1911-12	5-4	1-1	0-0
1910-11	2-4	1-1	0-0
1909-10	2-3	0-2	0-0
1908-09	3-2	0-1	0-0

**Home Record:** 516- 490 .513  
**Away Record:** 155 - 689 .184  
**Neutral:** 54 - 133 .289  
**TOTAL:** 725 - 1312 .356

**Bold denotes school record**



*The Keydets have won 516 home games in the history of the program- including 164 at Cameron Hall.*

# Conference History

## BIG SOUTH CONFERENCE (2003-PRESENT)

### ■ BIG SOUTH STANDINGS

	Won	Lost	Finish
2003-04	4	12	7th
2004-05	3	13	9th
2005-06	2	14	9th

### ■ BIG SOUTH TOURNAMENT

2004 High Point 75, VMI 43

### ■ ALL-BIG SOUTH CONFERENCE

2004 - Radee Skipworth (2nd team)  
2006 - Reggie Williams (2nd team)

### ■ ALL-FRESHMAN TEAM

2005 - Reggie Williams  
2006 - Travis Holmes

## SOUTHERN CONFERENCE (1924-2003)

### ■ SOCON STANDINGS

(Since Conference Realignment)

	Won	Lost	Finish
1953-54	6	7	6th
1954-55	4	9	8th
1955-56	3	11	9th
1956-57	1	13	10th
1957-58	1	12	10th
1958-59	2	11	9th
1959-60	3	11	7th
1960-61	3	11	8th
1961-62	6	8	6th
1962-63	6	10	7th
1963-64	7	7	4th
1964-65	5	9	8th
1965-66	5	11	7th
1966-67	4	12	9th
1967-68	8	7	4th
1968-69	3	11	8th
1969-70	3	10	8th
1970-71	1	11	7th
1971-72	2	10	7th
1972-73	3	9	8th
1973-74	3	9	7th
1974-75	6	6	4th (tie)
1975-76	9	3	1st
1976-77	8	2	1st (tie)
1977-78	7	3	2nd
1978-79	2	8	8th
1979-80	6	10	6th (tie)
1980-81	3	13	8th
1981-82	1	15	9th
1982-83	1	15	9th
1983-84	4	12	9th
1984-85	7	9	5th (tie)
1985-86	5	11	7th
1986-87	5	11	6th
1987-88	6	10	7th
1988-89	5	9	7th
1989-90	7	7	4th (tie)
1990-91	5	9	6th
1991-92	3	11	6th (tie)
1992-93	3	15	9th
1993-94	2	16	10th
1994-95	6	8	4th North
1995-96	10	4	2nd North
1996-97	7	7	4th North
1997-98	8	7	3rd North
1998-99	9	7	4th North
1999-2000	1	15	6th North
2000-01	5	11	5th North
2001-02	5	11	5th North
2002-03	3	13	5th North

### ■ SOCON TOURNAMENT

1954 Richmond 84, VMI 66  
1955 West Virginia 73, VMI 66  
1960 West Virginia 90, VMI 83  
1961 West Virginia 89, VMI 71  
1962 VMI 76, Furman 61  
Virginia Tech 70, VMI 66  
1963 Davidson 108, VMI 71  
1964 VMI 77, Furman 73  
VMI 82, Davidson 81

1965 VMI 61, George Washington 56  
Davidson 86, VMI 73  
1966 West Virginia 95, VMI 80  
1968 Furman 62, VMI 52  
1969 Davidson 99, VMI 75  
1970 Davidson 72, VMI 46  
1971 William & Mary 69, VMI 65  
1972 Furman 126, VMI 80  
1973 Davidson 88, VMI 77  
1974 Richmond 69, VMI 59  
1975 VMI 85, Richmond 81  
Furman 94, VMI 81  
1976 VMI 71, Davidson 69  
VMI 71, Appalachian State 64  
VMI 41, Richmond 33  
1977 VMI 88, East Carolina 77  
VMI 69, Appalachian State 67 (OT)  
VMI 95, Davidson 80  
1978 Marshall 76, VMI 71  
Appalachian State 73, VMI 63  
1979 Furman 87, VMI 75  
1980 UT-Chattanooga 89, VMI 63  
1981 VMI 65, Western Carolina 63 (OT)  
1985 VMI 71, UT-Chattanooga 69 (OT)  
Marshall 70, VMI 65  
Davidson 71, VMI 62  
1986 Davidson 92, VMI 63  
1987 VMI 78, Furman 73  
1988 VMI 79, East Tennessee St. 60  
UT-Chattanooga 75, VMI 61  
1989 Furman 81, VMI 73  
1990 VMI 83, UT-Chattanooga 69  
East Tennessee St. 99, VMI 94  
1991 Appalachian State 100, VMI 72  
1992 UT-Chattanooga 84, VMI 49  
1993 Furman 76, VMI 51  
1994 VMI 84, Marshall 62  
Davidson 71, VMI 61  
1995 Georgia Southern 94, VMI 71  
1996 VMI 91, Furman 89 (OT)  
Western Carolina 97, VMI 93  
1997 VMI 87, Furman 84 (OT)  
UTC 84, VMI 62  
1998 The Citadel 77, VMI 66  
1999 Furman 57, VMI 49  
2000 Wofford 81, VMI 72  
2001 Georgia Southern 76, VMI 59  
2002 The Citadel 80, VMI 70  
2003 VMI 62, Furman 56  
VMI 66, Davidson 60  
Chattanooga 77, VMI 58

### ■ NCAA TOURNAMENT

1964 First Round - East Regionals  
Princeton 86 VMI 60  
1976 First Round - East Regionals  
VMI 81 Tennessee 75  
Semifinals - East Regionals  
VMI 71 DePaul 66 (OT)  
Finals - East Regionals  
Rutgers 91 VMI 75  
1977 First Round - East Regionals  
VMI 73 Duquesne 66  
Semifinals - East Regionals  
Kentucky 93 VMI 78

### ■ SOCON RECORD HOLDERS

#### Individual Records

HIGHEST FIELD GOAL PERCENTAGE (GAME) - .....  
.....Lester Johnson, 1.000 (11-11), 1995  
MOST REBOUNDS (GAME) - .....  
.....Bill Ralph, 31 vs Hampden-Sydney, 1954

### ■ ALL-SOUTHERN CONFERENCE

1960 - Norm Halberstadt (2nd team)  
1961 - Norm Halberstadt (2nd team)  
1962 - Norm Halberstadt (2nd team)  
1963 - Bill Blair (2nd team)  
1964 - Bill Blair  
1965 - Charlie Schmaus, Joe Kruszewski (2nd team)  
1966 - Charlie Schmaus, Robin Porter (2nd team)  
1968 - John Kemper (2nd team), Steve Powers (2nd team)  
1969 - John Mitchell (2nd team)  
1971 - Jan Essenburg (2nd team)  
1975 - John Krovic (2nd team)  
1976 - Ron Carter, Will Bynum (2nd team)  
1977 - Ron Carter, Will Bynum  
1978 - Ron Carter, Dave Montgomery (2nd team)  
1980 - Andy Kolesar  
1984 - Gay Elmore  
1985 - Gay Elmore, Cedric Wins (2nd team)

1986 - Gay Elmore  
1987 - Gay Elmore  
1989 - Ramon Williams, Damon Williams (2nd team)  
1990 - Damon Williams, Ramon Williams (2nd team)  
1991 - Greg Fittz (2nd team)  
1992 - Lewis Preston (2nd team), Jonathan Penn (2nd team)  
1993 - Lewis Preston (2nd team)  
1995 - Lawrence Gullette (2nd team)  
1996 - Lawrence Gullette  
1997 - Darryl Faulkner (2nd team)  
1998 - Darryl Faulkner, Jason Bell (2nd team)  
1999 - Jason Bell  
2001 - Eric Mann  
2002 - Jason Conley  
2003 - Radee Skipworth (2nd team)

### ■ SOCON TOURNAMENT RECORDS

#### Individual Records

MOST BLOCKED SHOTS (GAME) - .....  
6, by Lewis Preston vs. Furman, 1993 (tied with two others)  
MOST ASSISTS (GAME) - .....  
.....13, Richard Little vs. Chattanooga, 2003

#### Team Records

MOST 3-POINT FIELD GOALS (GAME) - .....  
.....17, by VMI vs. Western Carolina, 1996  
FEWEST POINTS ALLOWED (GAME) - .....  
.....33, by VMI vs. Richmond, 1976  
FEWEST FIELD GOALS ALLOWED (GAME) - .....  
.....12, by VMI vs. Richmond, 1976  
FEWEST FREE THROWS ALLOWED (3 GAMES) - .....  
.....16, by VMI, 1976

### ■ ALL-TOURNAMENT TEAM

1960 - Norm Halberstadt (2nd team)  
1962 - Norm Halberstadt  
1964 - Bill Blair, Charlie Schmaus, Joe Kruszewski (2nd team)  
1965 - John Prosser (2nd team)  
1966 - Charlie Schmaus  
1975 - Will Bynum  
1976 - Will Bynum, Ron Carter, John Krovic  
1977 - Ron Carter, Dave Montgomery, John Krovic, Will Bynum (2nd team)  
1978 - Ron Carter  
1985 - Gay Elmore, Cedric Wins (2nd team), Darren Sawyer (2nd team), Mike Huffman (2nd team)  
1988 - Damon Williams, Ramon Williams, Bobby Gardner (2nd team)  
1990 - Damon Williams, Ramon Williams (2nd team)  
1996 - Brent Conley (2nd team), Maurice Spencer (2nd team)  
2003 - Radee Skipworth

### ■ ALL-FRESHMAN TEAM

1982 - Mark Vest, Cedric Wins  
1983 - Mike Huffman  
1984 - Gay Elmore  
1986 - Darrin McDonald  
1987 - Renard Johnson, Ramon Williams  
1989 - Percy Covington  
1992 - Bobby Jones  
1993 - Lawrence Gullette  
1994 - Darryl Faulkner, Warren Johnson  
1995 - Bryan Tauog  
1996 - Brent Conley  
2001 - Radee Skipworth  
2002 - Jason Conley

### ■ SOCON PLAYER OF THE YEAR

1977 - Ron Carter  
1978 - Ron Carter  
1986 - Gay Elmore  
1987 - Gay Elmore  
2002 - Jason Conley

### ■ SOCON FRESHMAN OF THE YEAR

1982 - Mark Vest  
1983 - Mike Huffman  
1984 - Gay Elmore  
1986 - Darrin McDonald  
1987 - Renard Johnson  
1996 - Brent Conley  
2002 - Jason Conley

### ■ SOCON COACH-OF-THE-YEAR

1977 - Charlie Schmaus  
1985 - Marty Fletcher  
1995 - Bart Bellairs

### ■ SOCON TOURNAMENT MVP

1976 - Ron Carter  
1977 - Dave Montgomery  
1985 - Gay Elmore

# Team Awards

## Roger E. Towne '36 Award

(Most Outstanding Senior 1966-2005)

(Most Outstanding Freshman 2006-Present)

1966	Charlie Schmaus
1967	Not Awarded
1968	Steve Powers John Kemper
1969	Johnny Mitchess
1970	Jim Gillespie
1971	Jan Essenberg
1972	Not Awarded
1973	Not Awarded
1974	Not Awarded
1975	Steve Chapin
1976	Curt Reppart
1977	Will Bynum
1978	Ron Carter
1979	Kelly Lombard
1980	Steve Wagner
1981	John Goode
1982	Bill Nivison
1983	Gary Mackin
1984	Tom Joynes
1985	Cedric Wins
1986	Mike Huffman
1987	Gay Elmore
1988	Bobby Gardner
1989	Steven Dorsey
1990	Damon & Ramon Williams
1991	Greg Fittz
1992	Percy Covington
1993	Lewis Preston
1994	Jonathan Goodman
1995	Not Awarded
1996	Lawrence Gullette & Bobby Prince
1997	Maurice Spencer
1998	Darryl Faulkner
1999	Jason Bell
2000	Aaron Demory
2001	Eric Mann
2002	Not Awarded
2003	Ben Rand
2004	Radee Skipworth
2005	Tim Allmond
2006	Chavis Holmes

## Robert L. Watson '64 Award

(Leading Rebounder Award)

1978	Dave Montgomery
1979	John Goode
1980	John Goode
1981	Geoff Hinshelwood
1982	Mark Vest
1983	Mike Herndon
1984	Gay Elmore
1985	Darren Sawyer
1986	Mark Current
1987	Mark Current
1988	Bobby Gardner
1989	Mark Craft
1990	Mark Craft
1991	Greg Fittz
1992	Lewis Preston
1993	Lewis Preston
1994	Jonathan Goodman
1995	Lawrence Gullette
1996	Brent Conley
1997	Eric Mann
1998	Eric Mann
1999	Aaron Demory
2000	Eric Mann
2001	Eric Mann
2002	Jason Conley
2003	Zach Batte

2004	Sam Mielnik
2005	Preston Beverly
2006	Matt Murrer

## Giles H. Miller '24 Award

(Most Outstanding Sophomore, 1972-2005)

(Most Improved Player, 2006-Present)

1972	David Lester
1973	Steve Chapin
1974	Curt Reppart
1975	Will Bynum
1976	Ron Carter
1977	Kelly Lombard
1978	Steve Wagner
1979	Andy Kolesar
1980	Bill Nivison
1981	Ed Kluckowski
1982	Tony Yelverton
1983	Darren Sawyer
1984	Mike Huffman
1985	Gay Elmore
1986	Bobby Gardner
1987	Lennon Mings
1988	Damon & Ramon Williams
1989	Greg Fittz
1990	Percy Covington
1991	Lewis Preston
1992	Jonathan Goodman
1993	Bryan Woolsey
1994	Lawrence Gullette
1995	Not Awarded
1996	Bryan Tauog
1997	Jason Bell
1998	Aaron Demory
1999	Nick Richardson
2002	Radee Skipworth
2003	Tim Allmond & Preston Beverly
2004	Tadas Mankevicius
2005	Matt Coward
2006	Matt Murrer

## Robert W. Wentz Jr. '54 Award

(Spirit of VMI)

1991	Thad Tegtmeier
1992	Charlie Petzold
1993	Juan Banks
1996	Lester Johnson
1997	B.J. Grinage
1998	Mike Spinelli
1999	Matt Matheny
2000	Andre Quarles
2001	Nick Richardson
2002	Renard Phillips
2003	Mike Gilbert
2004	Richard Little
2005	Sam Mielnik
2006	Fred Robinson

## John E. Kemper '58 Award

(Most Valuable Player)

2006	Reggie Williams
------	-----------------

## GTE/CoSIDA Academic All-Americans

1980	Andy Kolesar
1981	Andy Kolesar
1995	Bobby Prince (Third team)
1996	Bobby Prince (Third team)

## GTE/CoSIDA Academic All-District III

1991	Charlie Petzold
1995	Bobby Prince
1996	Bobby Prince

## SoCon Academic Honor Roll

1989	Kenny Johnson Charlie Petzold
1990	Kenny Johnson Charlie Petzold
1991	Charlie Petzold
1993	Bobby Prince Bryan Woolsey
1994	Bobby Prince Bryan Woolsey
1995	Bobby Prince Bryan Woolsey
1996	Lester Johnson Bobby Prince Mike Spinelli
1998	Richard Bruce Mike Spinelli
2002	Zach Batte
2003	Zach Batte Isaac Cecil Tadas Makevicius

## Big South Presidential Honor Roll

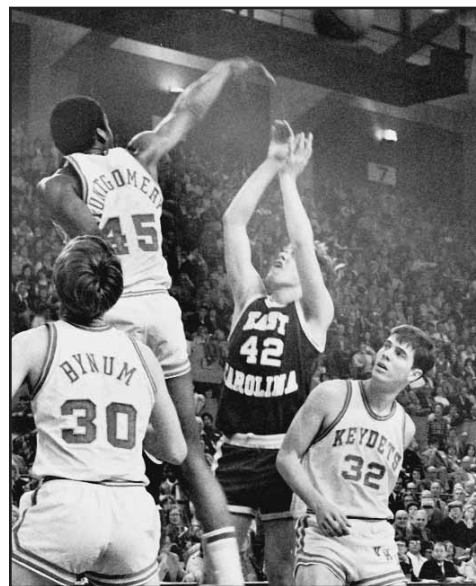
2004	Tadas Mankevicius Fred Robinson
2005	Tadas Mankevicius Fred Robinson
2006	Tadas Mankevicius Fred Robinson

## Big South Scholar-Athlete Team

2004	Tadas Mankevicius
2005	Tadas Mankevicius
2006	Tadas Mankevicius

## NCAA Post-Graduate Scholarship Recipients

1969	Johnny Mitchell
1971	Jan Essenburg
1977	Will Bynum
1981	Andy Kolesar
1987	Gay Elmore
1996	Bobby Prince



Dave Montgomery was the first recipient of the Robert L. Watson '64 award.

# Lettermen (1953-2006)

## A-A-A-A

Fred Allison, 1971-73  
Tim Allmond, 2002-05  
Robert Ayers, 1965-67

## B-B-B-B

Juan Banks, 1992-93  
Bernie Banas, 1981  
Zach Batté, 1999, 2002-03  
Curtis Beach, 1967  
Jason Bell, 1997-99  
Bob Benninger, 1972-74  
Preston Beverly, 2002-03, 2005-06  
Bill Blair, 1962-64  
George Borojevich, 1974-77  
Rodney Brewer, 1971-73  
Peyton Brown, 1967-69  
Richard Bruce, 1998-2001  
Will Bynum, 1974-77  
Charles Byrd, 1954-55  
Howard Byrd, 1996  
Robert Byrd, 1961-63

## C-C-C-C

Ron Carter, 1975-78  
Jack Castleberry, 2004, 2006  
Marty Chadwick, 1991  
Steve Chapin, 1973-75  
Sean Christiansen, 2005-06  
Denny Clark, 1967-69  
Tim Cole, 2000  
Donald Colwell, 1952-54  
Brent Conley, 1996  
Jason Conley, 2002  
Donald Coombs, 1956  
Jack Cooper, 1965-66  
Chuck Cotton, 1956-59  
William Coupland, 1955-57  
Percy Covington III, 1989-92  
Matt Coward, 2004-05  
Mark Craft, 1988-90  
Marty Cristo, 1979-81  
Mark Current, 1984, 86-87

## D-D-D-D

Aaron Demory, 1997-2000  
Bob DeVos, 1967-68  
Chris Dinunzio, 1997-98  
Stephen Dorsey, 1985  
Steven Dorsey, 1986, 88-89  
Jim Doyle, 1970-72

## E-E-E-E

Esau Eatman, 2003  
Weldon Eddins, 1960-62  
Gay Elmore, 1984-87  
Jan Essenburg, 1969-71  
Chi Chi Ezekwe, 2004

## F-F-F-F

Darryl Faulkner, 1994, 1997-98  
Richard Fencel, 1953-54  
Greg Fittz, 1989-91  
Bob Frank, 1972-74  
Richard Fravel, 1960  
James French, 1957  
Mike Frick, 1968

## G-G-G-G

Bobby Gardner, 1985-87  
Johnny Garnett, 1975  
Jeff Gausepohl, 1963-65  
Joe Gedro, 1960-62  
Mike Gilbert, 2001, 2003  
Jim Gillespie, 1968-70  
Dave Goode, 1957-59  
John Goode, 1978-81  
Jonathan Goodman, 1992-94  
Mark Grigsby, 2000  
B. J. Grinage, 1995, 1997  
Lawrence Gulette, 1993-96  
John Gupton, 1965-67  
Tim Gundlach, 1971-73  
Tom Guthrie, 1970-71  
James Guy, 1964

## H-H-H-H

Norm Halberstadt, 1960-62  
Alan Hansen, 1973  
Jeremy Harper, 2000-01  
Alex Harrington, 1997  
Jack Hartung, 1964-66  
Roy Heddleston, 1970  
Steve Heflin, 1982  
Mike Herndon, 1982-85  
Geoff Hinshelwood, 1979-81  
Chavis Holmes, 2006  
Travis Holmes, 2006  
Mike Huffman, 1983-86

## I-I-I-I

Walt Ivkovich, 1968-70

## J-J-J-J

Justin Jarman, 2006  
Dennis Johnson, 1978-81  
Kenny Johnson, 1990-91  
Lester Johnson, 1994-96  
Renard Johnson, 1987  
Warren Johnson, 1994-95  
Bobby Jones, 1992  
Levar Joseph, 2003, 2005

## K-K-K-K

Pat Kelley, 1976-78  
John Kemper, 1966-68  
Gary Kempel, 1962-63  
Karl Klinar, 1952-54  
Ed Kluckowski, 1982-83  
Andy Kolesar, 1978-81  
John Krovic, 1974-77

Joe Kruszewski, 1964-66  
James Kyle, 1956-57

## L-L-L-L

Jerry Lawson, 1958-60  
Ralph Lawson, 1956-59  
Gene Lazaroff, 1960-62  
David Lester, 1972-74  
Richard Little, 2001-04  
Kelly Lombard, 1976-78  
James Lowe, 1955

## M-M-M-M

Gary Mackin, 1981-82  
Charles MacLeod, 1955-57  
Mike Manis, 1968-69  
Tadas Mankevicius, 2003-06  
Eric Mann, 1997-98, 2000-01  
Matt Matheny, 1997-99  
Craig McCargo, 2006  
Darrin McDonald, 1986  
John McDowell, 1953-55  
Tommy McHugh, 1983-86  
James McKemie, 1954-55  
Ricky Mears, 1988  
Sam Mielnik, 2004-05  
Lennon Mings, 1987-90  
John Mitchell, 1967-69  
Dave Montgomery, 1975-78  
Marshall Mundy, 1954  
Matt Murrer, 2004-06

## N-N-N-N

Harlan Niehaus, 1976-77  
Bill Nivison, 1980-81  
Donald Nyman, 1953-56

## O-O-O-O

Frank Oley, 1959-61  
Larry Osborne, 1995-96

## P-P-P-P

Wayland Parker, 1972  
John Patrick, 1970  
Jonathan Penn, 1991-93  
Erek Perry, 1991  
Chris Peta, 1982-83  
Charlie Petzold, 1990-92  
Dusty Pflugner, 2006  
Renard Phillips, 1999-2001  
Robin Porter, 1965  
Steve Powers, 1966-68  
Daron Pressley, 2001-02  
Lewis Preston, 1990-93  
Bobby Prince, 1993-96  
John Prosser, 1963-65

## Q-Q-Q-Q

Roy Quinn, 1957-59  
Andre Quarles, 1996, 1999-2000

## R-R-R-R

Bill Ralph, 1952-54

Ben Rand, 2002-03  
Gordie Rawlyk, 1973-74  
Greg Ray, 1982  
Jerry Renfro, 1970-72  
Curt Reppart, 1973-76  
Nick Richardson, 1998-2001  
Fred Robinson, 2004-06  
Bobby Ross, 1956

## S-S-S-S

Jeryl Salmond, 1977-79  
Tom Savage, 1979-81  
Darren Sawyer, 1982-85  
Bill Schafer, 1970  
Charlie Schmaus, 1964-66  
Clarence Scott, 1987  
Ian Sears, 1982-83  
Jim Sefick, 1969-71  
Lee Seibert, 1970-71  
Jim Shanley, 1986  
Radee Skipworth, 2001-04  
Dave Slomski, 1976-77  
Saul Smith, 1976  
Harold Snyder, 1954-55  
Gale Sommers, 1970-71  
George Southard, 1956-59  
Maurice Spencer, 1994-97  
Mike Spinelli, 1995-98  
Sean Spriggs, 1991-94  
Dan Stephens, 1976  
Bill Stephens, 1971

## T-T-T-T

Thomas Tait, 1953-55  
Bryan Taueg, 1995-97  
Thad Tegtmeier, 1991  
John Thomas, 1969-70  
Steve Tooker, 1984-85, 87-88  
Aaron Trombley, 1999-2000  
Adam Trombley, 2000  
Charlie Tyler, 1972-74

## V-V-V-V

Mark Vest, 1982

## W-W-W-W

Steve Wagner, 1977-80  
Frank Walter, 1953-55  
Tom Watjen, 1975  
Bobby Watson, 1962-64  
Bob Wentz, 1952-54  
Robert Williamson, 1955  
Damon Williams, 1987-90  
Ramon Williams, 1987-90  
Reggie Williams, 2005-06  
Cedric Wins, 1982-85  
Bryan Woolsey, 1992-94  
Steve Wolf, 1972-74  
Ralph Wright, 1967

## Y-Y-Y-Y

Tony Yelverton, 1982  
John Yurachek, 1961-63

# Game-by-Game Results

<b>1908-1909</b>			39	Emory & Henry	1	46	Duke	13
<b>VMI</b>		<b>Opp.</b>	35	Elon	15	28	VPI (N)	26
23	Balt. YMCA	25	21	VPI (N)	22	<b>481</b>	<b>Total (11-1)</b>	<b>188</b>
19	Staunton Military	7	28	North Carolina	24			
14	Virginia	33	24	William & Mary	13			
47	Randolph-Macon	19	<b>269</b>	<b>Total (8-2)</b>	<b>189</b>	<b>VMI</b>	<b>1920-1921</b>	<b>Opp.</b>
17	at Virginia	23				58	Roanoke YMCA	15
15	VPI	9				54	Roanoke	11
<b>135</b>	<b>Total (3-3)</b>	<b>116</b>	<b>VMI</b>	<b>1915-1916</b>	<b>Opp.</b>	42	Lynchburg Elks	12
			64	Va. Chr. Col.	18	57	Richmond	18
			28	West Virginia	19	71	The Citadel	8
<b>VMI</b>	<b>1909-1910</b>	<b>Opp.</b>	42	G. Washington	13	45	VPI	21
26	Davidson	17	38	Richmond	17	38	North Carolina	23
17	Virginia	22	26	at Virginia	39	28	Lynchburg Elks	27
17	Lynchburg YMCA	40	45	William & Mary	18	15	at Pennsylvania	40
14	VPI	37	47	Elon	20	60	Florida	20
32	Staunton Military	15	34	Duke	20	33	St. John's (Md.)	12
19	at Staunton Military	39	23	North Carolina	25	53	Georgia Tech (N)	16
21	at Virginia	56	22	Wake Forest	40	66	Duke (N)	11
<b>146</b>	<b>Total (2-5)</b>	<b>226</b>	46	North Carolina State	21	31	Virginia (N)	15
			25	at VPI	19	45	N.C. State	20
			<b>440</b>	<b>Total (9-3)</b>	<b>269</b>	26	at VPI	11
<b>VMI</b>	<b>1910-1911</b>	<b>Opp.</b>		<b>1916-1917</b>	<b>Opp.</b>	27	VPI (N)	25
20	Roanoke	8				<b>749</b>	<b>Total (16-1)</b>	<b>305</b>
11	St. John's (Md.)	33	<b>VMI</b>					
14	Maryland	17	79	Va. Chr. Col.	12		<b>1921-1922</b>	
8	Virginia	35	20	Hampden-Sydney	14	<b>VMI</b>		<b>Opp.</b>
21	Tennessee	19	42	William & Mary	20	34	Lynchburg	14
18	VPI	35	32	Richmond	23	35	Emory & Henry	16
17	at Duke	52	30	Randolph-Macon	16	49	Roanoke Elks	20
41	at Lynchburg YMCA	23	32	West Virginia	29	44	Hampden-Sydney	8
<b>140</b>	<b>Total (3-5)</b>	<b>222</b>	30	Virginia	19	30	VPI	20
			29	Duke	31	41	Elon	18
			34	North Carolina State	10	40	St. John's (Md.)	24
<b>VMI</b>	<b>1911-1912</b>	<b>Opp.</b>	22	at North Carolina	33	26	Tennessee	19
16	Lynchburg	35	24	at Duke	42	23	Virginia	25
21	Emory & Henry	25	22	at North Carolina State	29	37	Kentucky	32
33	Roanoke	7	47	North Carolina	34	25	VPI (N)	26
45	Hampden-Sydney	10	22	VPI	37	25	N.C. State	11
18	Guilford	11	<b>465</b>	<b>Total (9-5)</b>	<b>349</b>	26	North Carolina	31
15	Virginia	16				17	at Virginia	34
23	Wake Forest	14		<b>1917-1918</b>		27	at Catholic	54
20	Lynchburg	52	<b>VMI</b>		<b>Opp.</b>	20	at G. Washington	31
34	at Roanoke	19	19	Lynchburg	27	36	at Takola	29
19	at Roanoke YMCA	39	37	Hampden-Sydney	22	19	at VPI	27
36	Roanoke YMCA	10	29	Davidson (N)	12	<b>549</b>	<b>Total (11-7)</b>	<b>439</b>
<b>280</b>	<b>Total (6-5)</b>	<b>238</b>	21	Elon	22			
			43	at Virginia	54		<b>1922-1923</b>	
			53	William & Mary	24	<b>VMI</b>		<b>Opp.</b>
<b>VMI</b>	<b>1912-1913</b>	<b>Opp.</b>	51	Duke	26	15	Washington Col.	26
24	Lynchburg YMCA	22	25	Virginia	26	3	Lynchburg	2
26	South Carolina	13	26	VPI	31	20	Roanoke	19
44	at Roanoke	6	41	Tennessee	19	19	VPI	22
55	North Carolina	6	35	North Carolina State	18	47	Randolph-Macon	9
10	at St. John's (Md.)	48	22	at VPI	29	20	North Carolina	26
11	at Georgetown	26	<b>402</b>	<b>Total (6-6)</b>	<b>310</b>	8	Virginia (N)	20
15	at Virginia	38				15	Florida	19
31	at VPI	13		<b>1918-1919</b>		16	VPI (N)	42
28	Duke	10	<b>VMI</b>		<b>Opp.</b>	24	South Carolina	9
28	George Washington	12	22	Roanoke College	23	20	G. Washington	4
48	Va. Chr. Col.	6	51	Randolph-Macon	13	21	at VPI	20
20	St. John's (Md.)	24	75	Va. Chr. Col.	6	18	at Takola	16
<b>340</b>	<b>Total (8-4)</b>	<b>224</b>	31	St. John's (Md.)	19	19	at Lynchburg Elks	13
			66	William & Mary	6	<b>295</b>	<b>Total (8-6)</b>	<b>247</b>
			31	VPI	19			
			17	at Navy	39		<b>1923-1924</b>	
<b>VMI</b>	<b>1913-1914</b>	<b>Opp.</b>	60	Davidson	10	<b>VMI</b>		<b>Opp.</b>
14	George Washington	20	28	North Carolina	42	22	VPI	11
38	South Carolina	5	33	at Virginia	25	25	North Carolina	40
12	Catholic	19	20	at VPI	32	23	at Virginia	32
44	Maryland	5	20	Duke	19	20	VPI (N)	15
32	Kentucky	18	32	Virginia	33	21	Maryland	12
15	Elon	16	25	VPI (N)	30	15	Bridgewater	26
42	Emory & Henry	7	24	<b>Total (8-6)</b>	<b>316</b>	30	Roanoke	11
20	N.C. State(N)	29	<b>515</b>			14	Wake Forest	18
26	Wake Forest	25		<b>1919-1920</b>		26	Roanoke Elks	22
15	Virginia (N)	51			<b>Opp.</b>	28	Lynchburg A.C.	22
16	VPI (N)	27	<b>VMI</b>			18	William & Mary	20
37	at North Carolina	29	54	Roanoke YMCA	2	25	at Delaware	19
<b>311</b>	<b>Total (6-6)</b>	<b>251</b>	40	Hampden-Sydney	14	23	Hampden-Sydney	11
			60	at Roanoke	10	19	Maryland (N)	34
			31	Randolph-Macon	25	<b>329</b>	<b>Total (9-5)</b>	<b>293</b>
<b>VMI</b>	<b>1914-1915</b>	<b>Opp.</b>	45	VPI	19			
20	George Washington	15	44	Auburn	13		<b>1924-1925</b>	
25	Un. Theo.I Sem. (Va.)	15	30	Virginia (N)	15	<b>VMI</b>		<b>Opp.</b>
26	Roanoke	23	14	West Virginia Wesleyan	23	17	Bridgewater	19
18	Virginia (N)	40	36	at VPI	10	17	Wake Forest	14
33	Duke	15		St. John's (Md.)				

30	VPI	29	27	Davidson	35	23	William & Mary	27
21	Lincoln-Memorial	10	22	Sewanee	31	27	Duke	28
21	at Virginia	27	22	at William & Mary	40	27	N.C. State	31
34	at Wake Forest	46	25	Maryland	44	20	at Virginia	29
24	at North Carolina	53	43	VPI	21	37	Richmond	53
26	Virginia	29	24	at Virginia	34	20	at North Carolina	33
40	Roanoke	34	23	at Maryland	39	36	William & Mary	43
18	Carson-Newman	16	20	Tennessee	28	30	at Richmond	49
19	North Carolina	26	<b>386</b>	<b>Total (4-10)</b>	<b>444</b>	24	at VPI	25
19	at VPI	27				<b>448</b>	<b>Total (3-14)</b>	<b>575</b>
26	Hampden-Sydney	16		<b>1930-1931</b>				
40	at Roanoke	28	<b>VMI</b>		<b>Opp.</b>		<b>1935-1936</b>	
20	Mississippi (N)	27	18	Maryland	35	<b>VMI</b>		<b>Opp.</b>
<b>248</b>	<b>Total (6-5)</b>	<b>239</b>	23	St. John's (Md.)	29	29	at Maryland	44
			22	Hampden-Sydney	27	23	at Navy	37
			47	Lynchburg	30	32	Maryland	53
<b>VMI</b>	<b>1925-1926</b>	<b>Opp.</b>	21	Virginia	28	41	William & Mary	37
17	Bridgewater	27	27	at VPI	28	26	VPI	31
21	Maryland	30	20	at Maryland	44	21	North Carolina	43
22	Georgia	30	24	at Navy	39	45	at Virginia	51
41	Lynchburg	20	13	at North Carolina	42	36	N.C. State	52
26	at Roanoke	18	31	VPI	30	36	Clemson	43
16	at Richmond	22	33	Richmond	28	36	Virginia	37
18	at VPI	20	22	at Virginia	25	29	Richmond	57
25	Virginia	29	28	William & Mary	29	37	Davidson	32
41	Auburn	25	45	Sewanee	28	48	at William & Mary	50
22	North Carolina	39	13	North Carolina State	25	28	Richmond	63
25	at Virginia	17	21	at North Carolina	30	31	at North Carolina	35
25	Carson-Newman	23	<b>408</b>	<b>Total (4-12)</b>	<b>497</b>	38	VPI	36
26	VPI	19				34	at South Carolina	37
33	Lynchburg	16		<b>1931-1932</b>		<b>570</b>	<b>Total (3-14)</b>	<b>738</b>
25	Kentucky (N)	32	<b>VMI</b>		<b>Opp.</b>			
<b>395</b>	<b>Total (7-8)</b>	<b>367</b>	6	St. John's (Md.)	25		<b>1936-1937</b>	
			23	Virginia	27	<b>VMI</b>		<b>Opp.</b>
			28	Maryland	43	28	Maryland	48
<b>VMI</b>	<b>1926-1927</b>	<b>Opp.</b>	27	Roanoke	35	29	North Carolina	56
31	Bridgewater	25	20	at Maryland	38	42	William & Mary	39
23	Richmond	48	19	at Navy	39	37	South Carolina	50
38	Lynchburg	23	22	N.C. State	31	45	at Lynchburg	47
21	Elon	23	26	Duke	41	43	Lynchburg	32
24	North Carolina State	30	18	VPI	25	30	VPI	22
9	at Virginia	17	20	William & Mary	28	27	Virginia	30
30	VPI	33	13	at Virginia	29	32	North Carolina State	49
32	Roanoke	19	24	at Duke	45	27	Richmond	35
20	Virginia	27	15	at North Carolina State	29	28	at Maryland	45
19	Duke	22	18	at VPI	23	32	Duke (N) (OT)	31
15	Maryland	32	<b>289</b>	<b>Total (0-14)</b>	<b>458</b>	32	at North Carolina	44
40	South Carolina	42				29	at Richmond	25
20	at VPI	26		<b>1932-1933</b>		49	at William & Mary	26
18	at Roanoke	19	<b>VMI</b>		<b>Opp.</b>	31	at VPI	32
14	Georgia (N)	36	26	St. John's (Md.)	24	30	at Virginia	38
<b>354</b>	<b>Total (3-12)</b>	<b>422</b>	30	Maryland	29	<b>571</b>	<b>Total (6-11)</b>	<b>647</b>
			41	Gallaudet	19			
			26	Virginia	25		<b>1937-1938</b>	
<b>VMI</b>	<b>1927-1928</b>	<b>Opp.</b>	34	VPI	38	<b>VMI</b>		<b>Opp.</b>
45	Bridgewater	28	29	at North Carolina	32	20	Elon	34
29	Alabama	18	17	North Carolina	36	27	Maryland	42
23	Maryland	35	20	at Duke	41	29	William & Mary	26
28	South Carolina	32	15	Duke	31	17	North Carolina	31
38	Va. Med. Col.	18	24	North Carolina State	39	30	Emory & Henry	31
35	VPI	22	21	William & Mary	27	20	Virginia	31
19	at Virginia	35	19	at Navy	51	25	at VPI	28
18	Virginia	28	29	at Maryland	45	34	Richmond	38
36	North Carolina State	29	16	at Virginia	32	33	at Maryland	43
44	Sewanee	21	25	at VPI	27	32	at Navy	46
36	Georgia	47	<b>362</b>	<b>Total (4-11)</b>	<b>496</b>	22	North Carolina	48
29	at VPI	11				35	at William & Mary	30
37	Georgia (N)	46		<b>1933-1934</b>		26	at Richmond	27
<b>417</b>	<b>Total (7-6)</b>	<b>370</b>	<b>VMI</b>		<b>Opp.</b>	35	at Virginia	33
			21	St. John's (Md.)	29	29	VPI	23
			18	North Carolina	38	<b>414</b>	<b>Total (4-11)</b>	<b>511</b>
			35	Virginia	33			
<b>VMI</b>	<b>1928-1929</b>	<b>Opp.</b>	11	at North Carolina	37		<b>1938-1939</b>	
41	Bridgewater	25	11	at Duke	41	<b>VMI</b>		<b>Opp.</b>
22	Georgia	34	20	at Richmond	33	28	at Roanoke	52
53	Elon	24	20	at VPI	22	28	North Carolina	35
42	VPI	19	19	Duke	45	48	William & Mary	43
29	Roanoke	25	32	William & Mary	19	39	Emory & Henry	37
9	at Virginia	21	23	at Maryland	36	23	Virginia (N)	33
32	William & Mary	19	27	at Navy	31	54	VPI	36
27	Maryland	30	19	Richmond	37	29	at North Carolina State	48
23	at VPI	33	19	VPI	26	41	at North Carolina	43
38	Davidson	37	43	at Virginia	25	54	Furman	33
23	Virginia	37	28	<b>Total (4-10)</b>	<b>452</b>	43	at VPI	30
32	at North Carolina State	42	<b>335</b>			20	Wake Forest	41
19	at North Carolina	32		<b>1934-1935</b>		29	Richmond	30
<b>392</b>	<b>Total (6-7)</b>	<b>378</b>	<b>VMI</b>		<b>Opp.</b>	35	at Maryland	53
			20	St. John's (Md.)	19	27	Virginia (N)	52
			24	at Maryland	39	45	at William & Mary	31
<b>VMI</b>	<b>1929-1930</b>	<b>Opp.</b>	22	at Navy	54	37	at Richmond	36
32	Hampden-Sydney	30	19	North Carolina	24	20	Richmond (N)	31
32	Bridgewater	30	19	Virginia	33	<b>600</b>	<b>Total (7-10)</b>	<b>664</b>
25	St. John's (Md.)	32	27	VPI	25			
22	North Carolina State	29	40	at Duke	27			
34	Virginia	26	32	at South Carolina	36	<b>VMI</b>	<b>1939-1940</b>	
35	at VPI	39	20					<b>Opp.</b>

31	Davidson	32	47	Lynchburg	10	55	at Maryland	70
25	Duke(N)	28	24	Virginia	43	52	at George Washington	69
33	Maryland	60	28	at Maryland	46	<b>937</b>	<b>Total (3-16)</b>	<b>1213</b>
32	at VPI	40	23	at Hampden-Sydney	46			
28	Richmond	26	24	at William & Mary	43			
24	at Virginia	27	29	at Richmond	55	<b>VMI</b>	<b>1949-1950</b>	<b>Opp.</b>
32	William & Mary (N)	42	27	West Virginia (N)	68	52	Camp Meade	67
50	VPI	35	29	at VPI	42	66	Norfolk NAS	83
25	at Maryland	27	35	at Virginia	52	65	at Quantico Marines	68
36	William & Mary	59	35	Maryland	27	26	at Navy	76
21	Richmond	52	25	Hampden-Sydney	42	55	Virginia	78
<b>461</b>	<b>Total (3-12)</b>	<b>590</b>	<b>360</b>	<b>Total (2-10)</b>	<b>531</b>	43	William & Mary	68
						41	VPI	73
						72	at Richmond	64
						53	at Maryland	65
<b>VMI</b>	<b>1940-1941</b>	<b>Opp.</b>	<b>1945-1946</b>	<b>Opp.</b>	<b>72</b>	72	at G. Washington	83
35	William & Mary (N)	41	<b>VMI</b>	47	60	60	at Roanoke	59
30	North Carolina	56	28	Marine Inst.	28	62	Maryland	61
64	Maryland	30	30	Richmond	33	57	at Wake Forest	74
42	Virginia	39	30	at Hampden-Sydney	58	47	at Davidson	68
43	at William & Mary	36	28	at VPI	51	55	at Furman	58
18	at Richmond	28	20	Virginia	48	62	Richmond	70
40	N.C. State	29	24	VPI	56	64	at Virginia	71
26	at Virginia	49	19	at Virginia	48	57	at William & Mary	74
60	VPI	52	25	at George Washington	39	73	Clemson	83
33	at VPI	31	28	William & Mary	51	58	Roanoke	56
39	Richmond	28	22	at Richmond	60	58	at VPI	78
41	at Maryland	27	32	at William & Mary	<b>519</b>	<b>1198</b>	<b>Total (4-17)</b>	<b>1477</b>
35	at N.C. State	37	<b>286</b>	<b>Total (1-10)</b>				
44	at Wake Forest	43						
39	Washington & Lee (N)	32		<b>1946-1947</b>	<b>Opp.</b>	<b>VMI</b>	<b>1950-1951</b>	<b>Opp.</b>
36	South Carolina	37	<b>VMI</b>	62	47	44	Norfolk NAS	51
<b>625</b>	<b>Total (10-6)</b>	<b>595</b>	55	Cedarville	51	51	at Roanoke	74
			51	Ft. Belvoir	54	66	Duke	86
			55	Quantico Marines	43	60	Wake Forest	68
<b>VMI</b>	<b>1941-1942</b>	<b>Opp.</b>	55	Langley Field	62	69	at West Virginia Tech	76
67	Bridgewater	31	47	at Virginia	53	60	at Morris Harvey	71
42	William & Mary	47	52	VPI	64	56	G. Washington	79
47	Duke (N)	52	50	Maryland	53	56	Richmond	64
57	Richmond	36	44	George Washington	60	47	at Virginia	50
21	Virginia	27	52	Richmond	54	53	at Richmond	52
28	at North Carolina	49	44	Wake Forest	63	49	Virginia	60
43	Wake Forest	44	64	Clemson	63	67	West Virginia	99
46	at Maryland	41	56	William & Mary	47	39	at Quantico Marines	62
34	Wake Forest	64	41	at VPI	65	60	at VPI	85
26	at VPI	28	48	at Hampden-Sydney	53	41	Maryland	46
43	VPI	42	51	at Richmond	66	67	at William & Mary	87
43	Furman	38	32	at William & Mary	81	68	Furman	70
29	at Richmond	43	48	at G. Washington	53	87	Davidson	74
32	at William & Mary	33	45	at Maryland	59	43	William & Mary	76
49	at Virginia	34	37	Virginia	79	79	VPI	76
36	George Washington	35	<b>934</b>	<b>Total (4-15)</b>	<b>1091</b>	46	at Maryland	65
36	at Maryland	39				<b>1218</b>	<b>Total (3-18)</b>	<b>1471</b>
32	at George Washington	44		<b>1947-1948</b>	<b>Opp.</b>			
<b>711</b>	<b>Total (7-11)</b>	<b>727</b>	<b>VMI</b>	54	34		<b>1951-1952</b>	<b>Opp.</b>
			40	Lynchburg	59	<b>VMI</b>	Roanoke	58
			72	at George Washington	32	56	at William & Mary	80
<b>VMI</b>	<b>1942-1943</b>	<b>Opp.</b>	46	Bridgewater	53	53	at Wake Forest	75
41	William & Mary	38	39	Maryland	50	45	at Duke	102
43	Duke	45	39	at William & Mary	56	39	at Maryland	57
43	VPI	33	34	Richmond	63	47	at Connecticut	63
35	Maryland	34	35	Virginia	88	55	at Connecticut	74
39	Virginia	25	48	at Maryland	50	55	at Morris Harvey	78
35	at North Carolina	37	42	at West Virginia	63	60	at Virginia	89
27	Richmond	36	39	VPI	55	62	G. Washington	77
42	at VPI	39	53	at Davidson	54	78	at Richmond	67
39	George Washington	42	54	at Furman	61	76	Norfolk NAS	71
41	at William & Mary	33	61	Richmond	55	54	at Navy	59
48	at Richmond	30	47	at Virginia	51	76	at Furman	80
35	at Virginia	36	43	at Roanoke	49	66	at West Virginia	91
36	at Maryland	35	45	George Washington	53	59	at Davis & Elkins	76
45	at George Washington	65	37	Roanoke	90	60	at George Washington	75
37	at Navy	48	52	William & Mary	59	46	at Maryland	64
41	Duke (N)	57	47	N.C. State(N)	54	54	VPI	73
<b>627</b>	<b>Total (8-8)</b>	<b>633</b>	<b>941</b>	<b>Total (3-17)</b>	<b>1128</b>	80	Virginia	86
						49	West Virginia	84
				<b>1948-1949</b>	<b>Opp.</b>	71	William & Mary	86
<b>VMI</b>	<b>1943-1944</b>	<b>Opp.</b>	<b>VMI</b>	William & Mary	77	64	Richmond	77
25	at W. Wilson Hosp.	28	54	George Washington	71	56	at VPI	53
25	Virginia	37	54	at Richmond	52	<b>1417</b>	<b>Total (3-21)</b>	<b>1795</b>
36	at Maryland	43	45	at William & Mary	75			
22	North Carolina (N)	50	65	Virginia	63			
16	at Virginia	58	37	Roanoke	52	<b>VMI</b>	<b>1952-1953</b>	<b>Opp.</b>
20	VPI	46	47	at Roanoke	48	66	George Washington	87
38	at Emory & Henry	51	39	at Maryland	53	61	Lynchburg	53
17	at VPI	39	37	Furman	66	62	Virginia	69
35	Ashford Gen. Hosp.	42	45	at VPI	66	37	Maryland	54
36	Ashford Gen. Hosp.	42	68	Davidson	51	72	Roanoke	66
30	W. Wilson Hosp.	36	53	Clemson	64	64	at George Washington	98
29	Maryland	31	31	Richmond	51	62	North Carolina	79
32	at Newport News App.	52	43	at Virginia	65	78	at Virginia	89
19	at Richmond	65	70	at Quantico Marines	65	64	at William & Mary	88
<b>380</b>	<b>Total (0-14)</b>	<b>620</b>	52	at West Virginia	96	65	Richmond	75
			49	VPI	59	55	at Duke	78
			48					
<b>VMI</b>	<b>1944-1945</b>	<b>Opp.</b>	48					



N30	57	at N.C. State	69
D2	59	at Tennessee	71
D6	51	William & Mary	56
D10	80	at George Washington	75
D13	68	at West Virginia	64
D15	64	Furman	51
D20	80	at Clemson	100
D31	71	at Vanderbilt	87
J4	83	Florida State	72
J7	58	Davidson	70
J9	73	at West Virginia	75
J28	86	East Carolina	78
F1	91	at Davidson	129
F4	94	George Washington	75
F8	90	at Richmond	96
F11	89	The Citadel	88
F15	70	at William & Mary	65
F18	98	Richmond	83
F21	77	at The Citadel	79
F22	64	at Furman	70
F27	77	Furman *	73
F28	82	Davidson *	81
M1	61	George Washington *	56
M9	60	Princeton #	86

**1779 Total (12-12) 1853**  
*\*Southern Conference Tournament in Charlotte, N.C.*  
*#NCAA East Regional in Philadelphia, Pa.*

**1964-1965**

<b>VMI</b>			<b>Opp.</b>
D2	59	at Florida	68
D3	72	at Florida State	76
D9	95	Virginia	75
D11	73	W. Virginia (Charleston, W. Va.)	79
D15	69	at Davidson	91
D17	63	at William & Mary	66
D29	91	Centenary #	86
D30	72	Arkansas #	70
J2	62	at George Washington	70
J4	71	The Citadel	70
J6	79	at West Virginia	87
J12	65	at Richmond	71
J18	71	at Georgia Tech	82
J30	98	at Furman	83
F2	78	Davidson	84
F5	72	at The Citadel	84
F6	69	at Furman	67
F10	61	William & Mary	57
F16	80	Richmond	81
F18	87	George Washington	79
F25	73	Davidson *	86

**1560 Total (8-13) 1612**  
*#Gulf South Classic in Shreveport, La.*  
*\*Southern Conference Tournament in Charlotte, N.C.*

**1965-1966**

<b>VMI</b>			<b>Opp.</b>
D1	58	W. Virginia (Charleston, W. Va.)	69
D4	73	Richmond	77
D8	75	at West Virginia	93
D14	64	Davidson	67
D17	77	Centenary #	78
D18	70	LSU #	73
D20	64	Florida State +	65
D21	73	Columbia +	80
J3	97	at George Washington	74
J8	89	William & Mary	74
J10	90	Furman	83
J13	88	at Richmond	103
J15	73	at Georgia Tech	86
J17	85	at East Carolina	87
J29	80	East Carolina	93
F1	84	at Davidson	97
F5	109	G. Washington	92
F8	80	The Citadel	77
F12	67	at William & Mary	94
F14	69	at The Citadel	71
F15	72	at Furman	73
F19	65	at Virginia	79
F24	80	West Virginia *	95

**1782 Total (5-18) 1880**  
*#Gulf South Classic in Shreveport, La.*  
*+ Tampa Invitational in Tampa, Fla.*  
*\*Southern Conference Tournament in Charlotte, N.C.*

**1966-1967**

<b>VMI</b>			<b>Opp.</b>
D1	58	at N.C. State	67
D3	74	Richmond	76
D7	75	at West Virginia	99
D10	105	Furman	96
D13	80	Davidson	82
D20	65	at Richmond	89
D28	71	Arkansas State #	81
D29	66	Kent State # (OT)	63

J7	72	at East Carolina	79
J11	62	George Washington	65
J14	70	Wake Forest	71
J16	77	W. Virginia (Charleston, W.Va.)	91
J28	68	East Carolina	67
J30	66	G. Washington (Ft. Myer, Va.)	71
F3	70	The Citadel	73
F7	57	at William & Mary	64
F11	71	at Furman	57
F13	78	at The Citadel (40T)	81
F17	81	William & Mary	67
F21	69	at Davidson	73
F24	71	Samford	81

**1558 Total (5-16) 1672**  
*#Arkansas State Invitational in Jonesboro, Ark.*

**1967-1968**

<b>VMI</b>			<b>Opp.</b>
D2	73	at Davidson	80
D4	79	at Samford	84
D7	79	Virginia	84
D11	83	Furman	80
D16	96	Old Dominion	88
D20	82	at William & Mary	96
D22	57	at West Virginia	77
J3	92	West Virginia (Beckley, W.Va.)	90
J6	60	at Wake Forest	92
J9	91	Richmond	85
J27	70	George Washington	58
J30	70	at Georgia Tech	90
F2	81	The Citadel	67
F5	68	William & Mary	62
F7	59	G. Washington (Ft. Myer, Va.)	60
F10	73	at Furman	76
F12	87	at The Citadel	77
F15	69	East Carolina	64
F17	76	at Richmond	86
F24	68	at East Carolina	79
F29	52	Furman *	62

**1565 Total (9-12) 1637**  
*\*Southern Conference Tournament in Charlotte, N.C.*

**1968-1969**

<b>VMI</b>			<b>Opp.</b>
N30	72	at Davidson	82
D2	70	at The Citadel	88
D5	83	Furman	55
D10	72	at George Washington	83
D19	80	Richmond #	90
D27	75	Utah +	83
D28	72	Rutgers +	79
D20	53	at Indiana State	73
J8	65	West Virginia (N)	68
J11	74	Richmond	89
J15	87	at West Virginia	84
J18	64	Davidson	66
J20	75	East Carolina	83
J25	68	at Furman	71
J27	99	Old Dominion	93
J30	72	William & Mary	71
F5	74	Georgia Tech (Salem, Va.)	87
F8	88	at Richmond	104
F10	77	The Citadel	79
F15	78	at William & Mary	83
F18	90	George Washington	86
F22	62	at East Carolina	78
F27	75	Davidson *	99

**1725 Total (5-18) 1874**  
*#Big 5 Tournament in Salem, Va.*  
*+ Utah Classic in Salt Lake City, Utah*  
*\*Southern Conference Tournament in Charlotte, N.C.*

**1969-1970**

<b>VMI</b>			<b>Opp.</b>
D1	82	Atlantic Christian	76
D3	66	at Navy	71
D6	78	at G. Washington	80
D10	44	at Virginia	65
D18	64	William & Mary #	75
D20	61	Richmond #	69
D29	61	Stetson +	62
D30	66	Florida Southern +	60
J5	72	at Old Dominion	94
J8	52	at Davidson	95
J10	66	at East Carolina	108
J13	71	Richmond	70
J17	70	at The Citadel	84
J21	79	Roanoke	90
J24	78	Wofford	64
J29	55	Old Dominion	90
J31	49	East Carolina	63
F2	79	G. Washington	107
F5	67	Furman	66
F10	74	William & Mary	68
F14	58	at William & Mary	77

F17	61	The Citadel	68
F19	54	at Richmond	78
F21	52	at Furman	53
F26	46	Davidson *	72

**1605 Total (6-19) 1905**  
*#Big 5 Tournament in Hampton, Va.*  
*+ Gold Coast Classic in West Palm Beach, Fla.*  
*\*Southern Conference Tournament in Charlotte, N.C.*

**1970-1971**

<b>VMI</b>			<b>Opp.</b>
D1	52	Virginia #	81
D3	57	Richmond #	75
D5	47	at Army	82
D7	85	Old Dominion	94
D19	49	at William & Mary	75
D23	46	at Toledo	79
J2	68	at Furman	93
J4	67	South Alabama +	80
J6	70	Trinity +	95
J9	63	East Carolina	71
J12	72	Gardner Webb	95
J16	64	The Citadel (OT)	66
J20	73	Roanoke	96
J23	56	at Old Dominion	95
J25	45	Eastern Illinois	59
J27	67	George Washington	78
J30	67	at East Carolina	78
F2	39	Davidson	70
F4	65	at The Citadel	91
F8	73	Richmond	63
F10	47	at Navy	65
F13	79	Furman	88
F16	69	William & Mary	85
F20	77	at Richmond	93
F24	64	at Davidson	109
M4	65	William & Mary *	69

**1626 Total (1-25) 2125**  
*#Big 5 Tournament in Hampton, Va.*  
*+ Senior Bowl Tournament in Mobile, Ala.*  
*\*Southern Conference Tournament in Charlotte, N.C.*

**1971-1972**

<b>VMI</b>			<b>Opp.</b>
D1	95	West Virginia Wesleyan	78
D4	101	Atlantic Christian (OT)	105
D11	61	at Richmond	73
D20	51	Virginia #	93
D21	57	Virginia Tech #	56
J3	69	at Roanoke	96
J5	71	at E. Illinois	111
J8	57	at East Carolina	62
J10	82	Old Dominion	96
J12	80	Wofford	63
J15	62	The Citadel (OT)	68
J18	57	Davidson	73
J20	66	at George Washington	104
J22	62	Furman	97
J25	59	at William & Mary	76
J29	56	East Carolina	66
F1	60	at Ohio University	98
F3	61	at Davidson	84
F7	66	Roanoke	87
F12	66	at Furman	104
F14	60	at The Citadel	87
F16	68	W. Va. Tech.	59
F22	37	William & Mary (OT)	35
F24	79	Richmond (2 OT)	74
M2	80	Furman *	126

**1663 Total (6-19) 2071**  
*#Big 5 Tournament in Roanoke, Va.*  
*\*Southern Conference Tournament in Greenville, S.C.*

**1972-1973**

<b>VMI</b>			<b>Opp.</b>
D2	95	Hampden-Sydney	81
D4	73	G. Washington	85
D6	67	at Virginia	85
D9	71	Richmond	60
D18	50	at Corpus Christi	57
D20	56	at Rice	72
D22	57	New Mexico State #	86
D23	60	Xavier #	59
J3	57	at Wake Forest	71
J6	63	at East Carolina	81
J10	55	Roanoke	56
J13	82	Appalachian State	68
J18	49	Furman	86
J20	87	West Virginia Tech	60
J27	45	East Carolina	71
J29	67	The Citadel	69
J31	59	at William & Mary	77
F3	58	at Roanoke	66
F6	88	Davidson	105
F10	60	at Furman	94

F12	62	at The Citadel	75
F15	60	Morris Harvey +	65
F17	56	at Old Dominion	72
F20	66	William & Mary	64
F22	84	at Richmond	113
M1	77	Davidson *	88
<b>1623</b>		<b>Total (7-19)</b>	<b>2123</b>

*+Forfeited because of ineligible player*  
*\*New Mexico State Invitational in Las Cruces, N.M.*  
*\*Southern Conference Tournament in Richmond, Va.*

**1973-1974**

<b>VMI</b>		<b>Opp.</b>	
D1	51	at Virginia Tech	62
D3	89	Hampden-Sydney	54
D5	48	West Virginia Tech	49
D8	74	at Appalachian State	65
D12	58	Madison College	54
D15	65	Towson State	66
D28	86	Arkansas #	96
D29	78	Connecticut #	80
J5	62	at Davidson	76
J10	85	Salem College	82
J12	58	East Carolina	59
J14	70	The Citadel	63
J19	69	Loyola (Md.)	71
J22	68	at William & Mary	85
J26	55	at East Carolina	57
J29	65	Richmond	81
F2	60	at Dayton	76
F6	65	William & Mary	67
F9	78	at Richmond	84
F13	62	Appalachian State	59
F16	66	at Furman	80
F18	47	at The Citadel	65
F21	76	Shepherd College	85
F27	59	at Richmond *	69
<b>1594</b>		<b>Total (6-18)</b>	<b>1685</b>

*#Razorback Classic in Little Rock, Ark.*  
*\*Southern Conference Tournament*

**1974-1975**

<b>VMI</b>		<b>Opp.</b>	
N30	64	Virginia Tech	96
D5	98	at Appalachian State	81
D10	68	at East Carolina	73
D14	90	Richmond	95
J4	89	at Middle Tennessee	93
J67	96	South Alabama #	116
J7	73	Louisiana Tech #	85
J11	98	at Richmond	95
J13	108	The Citadel	101
J15	86	Christopher Newport	66
J18	67	Towson State	65
J20	72	Bethany	43
J22	71	William & Mary	69
J25	80	East Carolina	82
J27	73	Appalachian State	55
J30	96	Shepherd College	83
F3	79	at George Washington	90
F5	51	Bridgewater	37
F8	82	at The Citadel	68
F11	93	Davidson (2OT)	94
F15	69	Old Dominion	84
F19	66	at William & Mary (OT)	67
F22	68	Furman	80
F26	99	Va. Wesleyan	68
M1	85	at Richmond *	81
M5	81	at Furman *	94
<b>2104</b>		<b>Total (13-13)</b>	<b>2061</b>

*#Senior Bowl Tournament in Mobile, Ala.*  
*\*Southern Conference Tournament*

**1975-1976**

*Southern Conference Champions*  
*NCAA East Region Finalists*

<b>VMI</b>		<b>Opp.</b>	
N29	92	Lebanon Valley	70
D1	106	Liberty Baptist	58
D3	76	at James Madison	82
D6	73	East Carolina	56
D8	68	Georgia Tech	53
D11	112	Radford	65
D13	65	Richmond	60
D29	60	Indiana State #	88
D30	72	Pacific #	59
J3	63	Virginia (Roanoke)	74
J7	82	at Furman	67
J10	108	Salem College	84
J12	74	at The Citadel	78
J15	70	at Old Dominion	72
J17	67	at Appalachian State	71
J21	84	William & Mary	78
J24	74	at East Carolina	60
J29	74	Wisconsin Green Bay (OT)	76

F2	56	at Georgia Tech	66
F5	97	Southeastern College	57
F7	62	at William & Mary	68
F11	92	at Davidson	76
F14	76	The Citadel	59
F18	74	at Richmond	67
F21	78	Appalachian State	74
F24	85	Central Wesleyan	48
F28	71	Davidson * (Lexington)	69
M2	71	Appalachian State *	64
M3	41	Richmond *	33
M13	81	Tennessee + (Charlotte, N.C.)	75
M18	71	DePaul (OT) + (Greensboro, N.C.)	66
M20	75	Rutgers + (Greensboro, N.C.)	91
<b>2450</b>		<b>Total (22-10)</b>	<b>2164</b>

*#Indiana Hall of Fame Classic in Terre Haute, Ind.*  
*\*Southern Conference Tournament in Greenville, S.C.*  
*+NCAA Eastern Regionals*

**1976-1977**  
*Southern Conference Champions*  
*NCAA East Region Semifinalists*

<b>VMI</b>		<b>Opp.</b>	
N26	85	James Madison #	77
N27	50	Virginia #	55
D4	78	at East Carolina	67
D8	74	Radford	52
D11	62	Old Dominion	60
D28	75	Tulane !	66
D29	73	California !	71
D30	69	Oklahoma City !	58
J5	73	Roanoke	57
J8	107	Emory & Henry	71
J10	74	Appalachian State	54
J12	92	William & Mary	79
J17	68	at The Citadel	62
J20	88	at Richmond	79
J22	67	East Carolina	58
J24	104	Central Wesleyan	97
J29	88	The Citadel	70
J31	99	Furman	86
F2	94	Hampden-Sydney	78
F7	97	Marshall (Roanoke)	90
F9	98	Morris Harvey	84
F12	92	Richmond	87
F14	83	Davidson	68
F16	84	at William & Mary	86
F19	58	at Appalachian State	62
F22	81	Randolph-Macon	75
F26	88	East Carolina *	77
M2	69	Appalachian State (OT) *	67
M12	73	Duquesne + (Raleigh, N.C.)	66
M17	78	Kentucky + (Coll. Park, Md.)	93
<b>2421</b>		<b>Total (26-4)</b>	<b>2152</b>

*#U.Va. Tipoff in Charlottesville, Va.*  
*!All College Tournament in Oklahoma City, Okla.*  
*\*Southern Conference Tournament in Roanoke, Va.*  
*+NCAA Eastern Regionals*

**1977-1978**

<b>VMI</b>		<b>Opp.</b>	
N25	64	Roanoke College #	50
N26	70	Virginia #	90
N28	105	Liberty Baptist	68
N30	107	Alderson Broaddus	90
D5	81	U.T./Chattanooga	72
D7	86	James Madison	68
D10	77	at Appalachian State	92
D28	68	Toledo !	91
D29	97	Long Beach St. !	106
J3	71	Cleveland State +	66
J4	72	Siena College +	61
J9	98	Central Wesleyan	79
J12	79	at Furman	102
J14	77	at Western Carolina	68
J17	79	Marshall	71
J21	84	Salem College	70
J23	89	at Davidson	69
J25	69	at Old Dominion	60
J28	79	at The Citadel	61
F1	110	Richmond	90
F4	61	at Roanoke	47
F8	66	at Richmond	51
F11	84	The Citadel	72
F13	71	at Marshall	88
F15	60	William & Mary (Hampton)	59
F18	77	Appalachian State	70
F25	95	Davidson *	80
M3	71	Marshall *	76
<b>2247</b>		<b>Total (21-7)</b>	<b>2067</b>

*#UVA Tipoff in Charlottesville, Va.*  
*!Blade Grass City Classic in Toledo, Ohio*  
*+Siena College Tournament in Loudonville, N.Y.*  
*\*Southern Conference Tournament in Lexington, Va.*  
*\*Southern Conference Tournament in Roanoke, Va.*

		<b>1978-1979</b>	<b>Opp.</b>
N27	114	UNC Greensboro	91
N29	90	Radford	88
N30	86	West Liberty State	83
D2	66	Virginia Tech (Roanoke)	79
D6	71	at James Madison	93
D9	90	Bethany	73
D13	82	at Appalachian State	103
D16	75	Georgia State	72
D28	91	Central Florida #	108
D29	89	Stetson #	98
J10	83	at The Citadel	91
J17	58	Appalachian State	73
J20	64	at UT Chattanooga	56
J22	75	Cleveland State (OT)	72
J24	78	Richmond	90
J27	65	Western Carolina	76
J31	75	Christopher Newport	49
F1	78	Campbell	74
F3	79	Fairleigh Dickinson	77
F5	63	at Marshall	58
F8	76	at Georgia State	72
F10	54	Davidson	81
F12	69	The Citadel	72
F14	66	Marshall	88
F19	65	Furman	80
F21	76	at Richmond	79
F24	63	at Appalachian State *	73
<b>2041</b>		<b>Total (12-15)</b>	<b>2154</b>

*#Tangerine Bowl Tournament in Winter Park, Fla.*  
*\*Southern Conference Tournament*

**1979-1980**

<b>VMI</b>		<b>Opp.</b>	
D1	43	Lebanon Valley	33
D3	73	Davidson	74
D6	99	Bluefield	66
D8	57	at Appalachian State	66
D10	56	at UT Chattanooga	55
D12	101	Concord	80
D15	58	Marshall	60
J5	82	at Cleveland State	102
J7	70	at Davidson (OT)	69
J10	65	at East Tennessee State	97
J12	75	at Marshall	63
J16	102	Baptist	82
J18	76	Clinch Valley	87
J21	72	at Western Carolina	71
J24	95	George Mason	81
J26	67	Furman	84
J28	72	The Citadel	71
J30	60	Baltimore	71
F2	92	at Richmond	104
F4	78	East Tennessee State	89
F7	71	at Fairleigh Dickinson	78
F9	55	UT Chattanooga	59
F11	78	Western Carolina	73
F14	49	Appalachian State	55
F16	77	at The Citadel (OT)	79
F18	75	at Furman	107
F23	75	at Furman *	87
<b>1969</b>		<b>Total (11-16)</b>	<b>2043</b>

*\*Southern Conference Tournament*

**1980-1981**

<b>VMI</b>		<b>Opp.</b>	
N28	61	at UCLA	99
N29	96	at California-Irvine	125
D3	82	Furman (OT)	87
D6	53	at UT Chattanooga	63
D9	61	Navy	71
D12	52	SW Louisiana #	80
D13	68	Western Michigan #	89
J3	81	Marshall	99
J7	43	at East Tennessee State	42
J10	63	at Furman	75
J12	58	at The Citadel	49
J14	57	at Baptist	44
J17	68	at Appalachian State	78
J19	67	East Tennessee State	68
J21	63	at Davidson	79
J24	41	at Baltimore	46
J26	53	Marshall	63
J29	73	Richmond	79
J31	71	Western Carolina	86
F2	65	The Citadel	62
F4	63	William & Mary (Roanoke)	95
F7	75	at Western Carolina	71
F9	51	Appalachian State	70
F11	82	Davidson	95
F16	68	UT Chattanooga	90
F19	65	at Campbell (Raleigh, N.C.)	89
F28	63	at UT Chattanooga *	89

**1743 Total (4-23)**  
**#Bayou Classic in Lafayette, La.**  
**\*Southern Conference Tournament**

1981-1982	
VMI	Opp.
N27 37	at Navy
D2 57	at William & Mary
D5 49	Virginia
D8 43	James Madison
D9 48	at Richmond
J4 63	at Marshall
J6 71	at Maine
J8 56	Illinois State #
J9 75	Manhattan #
J13 51	Old Dominion
J16 57	Western Carolina
J18 61	The Citadel
J21 61	at UT Chattanooga
J23 69	at Western Carolina
J25 58	at Davidson
J28 68	at East Tennessee State
J30 67	Appalachian State (OT)
F1 63	at Davidson
F4 76	at Virginia Tech
F6 69	East Tennessee State
F8 50	UT Chattanooga
F11 67	Marshall
F13 80	at Furman
F15 74	at The Citadel
F20 58	at Appalachian State
F22 83	Furman

**1606 Total (1-25)** **2185**  
**#Worcester County National Classic in Worcester, Mass.**

1982-1983	
VMI	Opp.
N28 33	at James Madison
N30 49	Longwood
D4 41	at Virginia
D7 45	at Old Dominion
D11 47	North Carolina Wesleyan
D13 75	Emory & Henry
J3 76	at South Florida
J8 64	at Marshall
J15 58	at Furman
J17 50	at The Citadel
J22 43	at Davidson
J24 61	at Appalachian State
J27 53	Navy
J29 68	UT Chattanooga
J31 55	Western Carolina
F3 69	Richmond
F5 50	at Western Carolina
F7 54	UT Chattanooga
F9 63	East Tenn. State
F14 61	Appalachian State
F16 65	William & Mary
F19 64	at East Tennessee State
F21 91	Marshall
F23 54	Virginia Tech
F26 65	The Citadel
F28 64	Furman
M3 68	Davidson

1983-1984	
VMI	Opp.
N28 75	Emory & Henry
N30 57	at Navy
D3 64	Radford
D5 83	Bridgewater
D7 75	Averett
D10 65	Old Dominion
D17 61	at Virginia Tech
J4 38	at UT Chattanooga
J7 62	at East Tennessee State
J9 58	at Richmond
J11 53	at Marshall
J14 54	at Appalachian State
J16 49	UT Chattanooga
J18 55	at William & Mary
J21 49	at Bucknell
J23 55	East Tennessee State
J28 55	at Davidson
J30 68	Western Carolina (OT)
F4 82	at Western Carolina
F6 58	at Furman
F8 61	at The Citadel
F11 67	Appalachian State
F13 44	Davidson
F16 61	Marshall
F20 64	The Citadel
F22 62	James Madison (OT)
F27 65	Furman

**2083** **1640 Total (8-19)**

1984-1985	
VMI	Opp.
N25 64	at James Madison (OT)
N26 86	Bridgewater
N28 50	at Old Dominion
D1 76	Lynchburg
D3 57	Virginia
D6 53	Radford
D8 80	Hampden-Sydney
J5 58	at Marshall
J14 60	UT Chattanooga
J17 52	at Appalachian State
J19 60	Western Carolina
J21 57	Davidson
J24 71	Furman
J26 54	at UT Chattanooga
J28 63	Marshall
J30 81	Bluefield
F2 60	Bucknell
F4 60	East Tennessee State
F6 50	William & Mary
F9 64	Appalachian State
F12 61	at The Citadel (OT)
F14 58	at Furman
F18 54	at Western Carolina
F21 63	at Davidson
F23 70	at East Tennessee State (OT)
F25 53	The Citadel
F27 48	Richmond
M1 65	Western Carolina * (OT)
M2 71	UT Chattanooga * (OT)
M3 65	Marshall *

**1863 Total (16-14)** **1816**  
**\*Southern Conference Tournament in Asheville, N.C.**

1985-1986	
VMI	Opp.
N23 63	Christopher Newport
N25 106	Averett
N26 69	Radford
D2 91	James Madison
D4 58	at Virginia
D10 61	at Richmond
D11 76	Lynchburg
D30 55	Kentucky (Louisville, Ky.)
J9 63	at Appalachian State
J11 74	at East Tenn. St.
J16 82	Marshall
J18 71	Furman
J20 66	The Citadel
J22 64	at William & Mary
J25 55	Western Carolina
J27 70	UT Chattanooga
J30 77	at Marshall
F1 68	at Davidson
F3 74	East Tennessee State
F8 83	at The Citadel
F10 70	at Furman (OT)
F12 70	Bluefield
F15 64	at UT Chattanooga
F17 96	at Western Carolina (OT)
F19 73	Virginia Tech
F22 67	Appalachian State
F24 76	Davidson
F28 62	Davidson *

**2004 Total (11-17)** **2081**  
**\*SoCon Tournament in Asheville, N.C.**

1986-1987	
VMI	Opp.
N30 80	Shenandoah
D1 68	at James Madison
D3 69	at Virginia
D6 68	Richmond
D8 77	Elon
D10 51	at Radford
D11 70	Roanoke
D22 60	at Tennessee
J7 68	at Virginia Tech
J10 66	at East Tennessee State
J12 68	Appalachian State
J15 71	Marshall
J17 71	at Furman
J19 78	at The Citadel (OT)
J21 113	Bluefield
J24 65	at Western Carolina
J26 63	at UT Chattanooga
J29 77	at Marshall
J31 65	Davidson
F7 68	The Citadel
F9 78	Furman (OT)
F11 76	William & Mary
F14 60	UT Chattanooga

1862	F16 62	Western Carolina	64
	F19 81	East Tennessee State	65
	F21 86	at Appalachian State	84
	F23 69	at Davidson	72
	F27 63	Davidson *	92
	1991	Total (11-17)	2122
	<b>*Southern Conference Tournament in Asheville, N.C.</b>		

1987-1988		
VMI	Opp.	
N30 78	Bridgewater (Va.) (OT)	
D2 68	Radford	
D5 45	at Georgetown	
D9 50	Roanoke	
D12 71	Shenandoah	
D28 76	at Texas	
J2 84	at Oral Roberts	
J6 55	at Richmond	
J11 59	at William & Mary	
J13 64	Davidson	
J16 65	at East Tennessee State	
J18 82	at Appalachian State	
J21 62	Marshall	
J23 69	Furman	
J25 77	The Citadel	
J27 94	Bluefield	
J30 79	Western Carolina	
F1 68	UT Chattanooga	
F4 91	at Marshall (OT)	
F6 59	at Davidson	
F8 61	East Tennessee State	
F11 71	James Madison	
F13 59	at The Citadel	
F15 64	at Furman	
F20 66	Appalachian State	
F27 70	at UT Chattanooga	
F29 75	at Western Carolina	
M4 78	Furman *	
M5 79	East Tennessee State*	
M6 61	UT Chattanooga *	
2080	Total (13-17)	2188
<b>*Southern Conference Tournament Asheville, N.C.</b>		

1988-1989		
VMI	Opp.	
N28 92	at James Madison	
D1 78	Shenandoah	
D5 82	at Tennessee (2OT)	
D8 96	Eastern Mennonite	
D10 76	UNC Greensboro	
D30 79	at N.C. State	
J7 70	at UNC Asheville	
J9 63	at Marshall	
J14 71	at Western Carolina	
J16 76	at UT Chattanooga (OT)	
J19 83	Virginia Tech (Roanoke) (OT)	
J21 91	Furman (3OT)	
J23 61	The Citadel	
J25 95	Bluefield	
J28 81	East Tennessee State	
J30 69	at Appalachian State	
F2 79	Richmond	
F4 65	Marshall	
F6 66	William & Mary	
F9 76	at Radford	
F11 68	UT Chattanooga	
F13 79	Western Carolina	
F16 79	at Virginia	
F18 79	at The Citadel	
F20 71	at Furman	
F25 60	Appalachian State	
F27 80	at East Tennessee State	
M3 73	Furman *	
2138	Total (11-17)	2132
<b>*Southern Conference Tournament in Asheville, N.C.</b>		

1989-1990	
VMI	Opp.
N27 87	Lynchburg
N30 77	UNC Asheville
D2 61	James Madison (Roanoke, Va.)
D4 77	at Richmond(OT)
D6 76	UNC Greensboro
D21 74	at Texas
D23 61	at Arkansas (Little Rock, Ark.)
D28 82	Brown #
D29 77	Mount St. Mary's#
J8 68	at Marshall
J13 66	at Western Carolina
J15 78	at Virginia
J18 95	Radford
J20 71	at Furman
J22 73	at The Citadel
J24 75	UT Chattanooga
J27 78	East Tennessee State

J29	73	Appalachian State	71
J31	95	Bluefield	46
F3	82	Marshall (OT)	77
F5	86	at William & Mary	66
F10	63	at UT Chattanooga	78
F12	70	Western Carolina	56
F16	77	The Citadel	76
F19	84	Furman	75
F24	75	at Appalachian State	80
F26	81	at East Tennessee State	100
M2	83	UT Chattanooga *	69
M3	94	East Tenn State *	99
<b>2239</b>		<b>(Total 14-15)</b>	<b>2224</b>

# Mount St. Mary's Holiday Tournament in Emmittsburg, Md.

\* Southern Conference Tournament in Asheville, N.C.

**1990-1991**

<b>VMI</b>		<b>Opp.</b>	
N23	77	at Virginia Tech	79
N26	91	Bluefield	76
N28	65	Bridgewater	48
N30	69	at Liberty	61
D3	61	at Radford	62
D7	80	Cornell#	93
D8	61	Kent State#	65
D18	45	at Alabama	79
D20	60	at Vanderbilt	79
J5	67	at Furman	87
J7	77	at The Citadel	65
J10	74	at UNC/Asheville	66
J12	85	Western Carolina	74
J14	67	U.T./Chattanooga	73
J19	71	Marshall	77
J21	80	Richmond	75
J23	46	William & Mary	58
J26	66	East Tennessee State	97
J28	72	at Appalachian State	78
F2	85	The Citadel	67
F4	80	Furman	79
F9	73	at U.T./Chattanooga	101
F11	64	at Western Carolina	80
F16	96	at Marshall	95
F21	67	at James Madison	82
F23	70	Appalachian State	83
F25	76	East Tennessee State	88
M1	72	Appalachian State*	100
<b>1997</b>		<b>(Total 10-18)</b>	<b>2167</b>

# U.S. Air Cornell Classic in Ithaca, N.Y.

\* Southern Conference Tournament in Asheville, N.C.

**1991-1992**

<b>VMI</b>		<b>Opp.</b>	
N25	100	Shenandoah	71
N29	65	Weber State#	83
N30	53	Army#	59
D4	79	Radford	69
D7	55	Liberty	64
D18	43	at Wake Forest	74
D30	56	at Dayton	84
J8	59	at Richmond	76
J11	79	at Western Carolina	74
J13	69	at UT-Chattanooga	83
J16	67	Winthrop	52
J18	74	at Marshall (2 OT)	69
J22	105	Bluefield College	71
J25	68	East Tennessee State	80
J27	67	Appalachian State	80
J29	62	UNC-Asheville	51
F1	60	at The Citadel	66
F3	57	at Furman	74
F8	75	UT-Chattanooga	85
F10	88	Western Carolina	89
F13	71	at Winthrop	63
F15	72	Marshall	79
F18	76	at William and Mary	68
F22	65	at Appalachian State	88
F24	84	at East Tennessee State	92
F29	65	Furman	72
M2	64	The Citadel	60
M6	49	U.T.-Chattanooga@	84
<b>1927</b>		<b>(Total 10-18)</b>	<b>2060</b>

# Weber State Military Tournament in Ogden, Utah  
@Southern Conference Tournament in Asheville, N.C.

**1992-1993**

<b>VMI</b>		<b>Opp.</b>	
D1	91	Bluefield	63
D5	65	at Richmond	77
D7	88	at Radford (OT)	91
D11	77	Cent. Connecticut St. # (OT)	84
D12	62	Lafayette #	56
J2	52	at Georgia Tech	78
J6	54	at East Tennessee State	71
J9	67	Western Carolina	56

J10	62	UT-Chattanooga	71
J13	93	at Appalachian State	86
J16	76	The Citadel	74
J17	70	Georgia Southern	73
J23	64	at Davidson	75
J24	61	at Furman	73
J27	66	at Marshall	80
J30	55	Appalachian State	64
J31	70	East Tennessee State	96
F3	67	William & Mary	77
F6	69	Marshall	78
F10	44	at Virginia Tech	75
F13	70	at UT Chattanooga	93
F14	51	at Western Carolina	84
F20	63	at Georgia Southern	69
F21	53	at The Citadel	69
F27	69	Furman	85
F28	70	Davidson	84
M4	51	Furman @	76
<b>1780</b>		<b>(Total 5-22)</b>	<b>2058</b>

# Marist Pepsi Classic Tournament in Poughkeepsie, N. Y.  
@ Southern Conference Tournament in Asheville, N. C.

**1993-1994**

<b>VMI</b>		<b>Opp.</b>	
N29	97	Bluefield College	58
D1	55	Richmond	74
D6	59	at Virginia Tech	82
D11	61	Radford	79
D22	73	at Dayton	85
J5	44	at Wake Forest	72
J8	58	at Western Carolina	68
J10	62	at UT Chattanooga	82
J12	70	Appalachian State	74
J15	50	at The Citadel	63
J17	61	at Georgia Southern	83
J20	92	East Tennessee State (OT)	93
J22	60	Davidson	78
J24	55	at Furman	67
J27	82	Marshall	78
J29	64	at Appalachian State	74
F2	104	Shenandoah	77
F5	64	at Marshall	78
F9	68	at William and Mary	79
F12	72	UT Chattanooga	92
F14	79	Western Carolina	76
F16	69	at East Tennessee State	97
F19	61	Georgia Southern	63
F21	57	The Citadel	80
F26	64	Furman	67
F28	65	at Davidson	79
M3	84	Marshall#	62
M4	61	Davidson#	71
<b>1891</b>		<b>(Total 5-23)</b>	<b>2131</b>

# Southern Conference Tournament in Asheville, N.C.

**1994-1995**

<b>VMI</b>		<b>Opp.</b>	
N28	93	Centenary (N.J.)	76
N29	96	Bluefield College	72
D3	85	Richmond	105
D7	75	at Virginia Tech	110
D10	93	at Radford	99
D17	89	at North Carolina	129
D19	73	at Virginia	100
J7	67	at Alabama	93
J9	83	at Navy	101
J14	77	at Western Carolina (OT)	90
J16	87	Marshall	112
J21	75	at Davidson	83
J23	69	East Tennessee State	89
J26	86	William & Mary	95
J28	89	at Appalachian State	85
J30	72	UT-Chattanooga	63
F4	84	Georgia Southern	79
F6	69	at The Citadel	84
F11	80	at East Tennessee State	78
F13	59	at Furman	66
F15	84	Lynchburg	60
F18	62	at Marshall	107
F20	81	Davidson	75
F22	91	Army	67
F25	89	Appalachian State	92
F27	75	The Citadel	66
M2	71	#Georgia Southern	94
<b>2154</b>		<b>(Total 10-17)</b>	<b>2370</b>

# SoCon Tournament in Asheville, N.C.

**1995-1996**

<b>VMI</b>		<b>Opp.</b>	
N25	78	at N. C. State	104
N28	100	Washington & Lee	62
N30	73	at Penn State	99
D2	110	Radford	103
D4	107	Lynchburg	74

D9	67	at Virginia Tech	99
D21	91	Eastern Mennonite	62
J3	101	Winthrop	78
J6	77	at Richmond	65
J15	71	at Marshall	78
J17	49	at William & Mary	90
J22	96	at East Tennessee State	86
J27	84	Appalachian State	64
J29	69	at UT Chattanooga	71
J31	79	at Davidson	86
F3	80	Wofford	66
F5	91	The Citadel	52
F7	71	at Georgia Southern	48
F10	82	East Tennessee State	79
F12	83	Furman	57
F14	90	Western Carolina	73
F17	103	Marshall	94
F19	76	Davidson	95
F22	76	North Carolina	99
F24	85	at Appalachian State	75
F26	85	at The Citadel	83
M1	91	# Furman (OT)	89
M2	93	# Western Carolina	97
<b>2358</b>		<b>(Total 18-10)</b>	<b>2228</b>

# SoCon Tournament in Greensboro, N.C.

**1996-1997**

<b>VMI</b>		<b>Opp.</b>	
N22	111	Albright	53
N24	63	at Wake Forest	92
D5	62	at Navy	68
D7	112	Washington and Lee	67
D10	68	at Radford	70
D15	61	North Carolina	105
D18	107	Eastern Mennonite	61
D21	96	at Winthrop	78
D30	63	at Florida International	91
J4	76	at UNC Charlotte	96
J6	72	at Appalachian State	77
J8	77	at Richmond	83
J11	76	UT Chattanooga	91
J13	75	Georgia Southern	61
J16	65	at Wofford	86
J18	86	at Citadel	76
J20	57	at East Tennessee State	54
J25	62	at Furman	60
J27	97	Marshall	92
F1	67	at Davidson	77
F3	78	Appalachian State	65
F8	74	The Citadel	81
F10	65	at Western Carolina	84
F15	77	at Marshall	79
F17	77	Davidson	97
F23	97	East Tennessee State	75
F27	87	Furman (OT)#	84
F28	62	UT-Chattanooga#	84
<b>2170</b>		<b>(Total 12-16)</b>	<b>2187</b>

# SoCon Tournament in Greensboro, N.C.

**1997-1998**

<b>VMI</b>		<b>Opp.</b>	
N15	70	at Wake Forest	88
N18	85	Elon College	69
N25	69	at Old Dominion	94
D2	95	West Virginia Tech	54
D6	70	UNC Charlotte	88
D14	71	Penn State	68
D20	113	Lynchburg College	59
D22	55	at Virginia	92
D31	73	at Virginia Tech	65
J3	76	at Georgia Southern (2OT)	73
J6	68	UNC Greensboro	65
J10	71	Appalachian State	76
J12	61	at Davidson	58
J14	97	Shenandoah	64
J17	80	at Western Carolina	78
J19	62	The Citadel	67
J24	66	at Chattanooga	79
J26	60	at UNC Greensboro	72
J31	94	Western Carolina	80
F2	92	at Wofford	80
F7	76	at Army	78
F10	87	Furman (OT)	81
F14	74	at Appalachian State	94
F16	66	Davidson	90
F19	66	at East Tenn. State	78
F21	74	East Tennessee State	65
F27	66	vs. The Citadel #	77
<b>2037</b>		<b>(Totals 14-13)</b>	<b>2022</b>

# SoCon Tournament in Greensboro, N.C.

**1998-1999**

<b>VMI</b>		<b>Opp.</b>	
N14	84	Elon College	85
N16	66	at Penn State	90

N24	69	at Old Dominion	103
N30	61	Wake Forest	75
D2	69	at Elon College	70
D5	81	Randolph-Macon	55
D7	86	at UNC Greensboro	84
D10	57	at UNC Charlotte	92
D18	90	Shenandoah	53
D22	64	at Virginia	82
J2	58	at East Tennessee State	55
J4	64	Davidson	85
J9	64	at Appalachian State	100
J11	91	at Western Carolina	72
J16	65	Georgia Southern	59
J18	58	Wofford	56
J23	85	Western Carolina	73
J25	66	at Davidson	76
J27	85	Southern Virginia	67
J30	51	at Furman	84
F1	74	at The Citadel (OT)	72
F6	81	East Tennessee State	83
F8	59	at College of Charleston	85
F13	65	Appalachian State	83
F15	82	UNC Greensboro	67
F20	73	Chattanooga	57
F25	49	vs. Furman #	57
<b>1897 (Total 12-15)</b>			<b>2020</b>

# SoCon Tournament in Greensboro, N.C.

<b>1999-2000</b>			
<b>VMI</b>			<b>Opp.</b>
N19	99	Southern Virginia	73
N20	85	Warren Wilson	38
N21	57	at Virginia	98
N26	56	vs. Oral Roberts!	44
N28	61	vs. Hawaii!	78
D1	82	Bluefield	76
D2	97	Ferrum	65
D6	46	Virginia Tech	65
D8	62	Old Dominion	71
D18	66	at Notre Dame	79
D21	86	at Virginia Commonwealth	101
D28	68	at Florida	113
J4	71	at UNC Greensboro	82
J8	69	College of Charleston (OT)	77
J10	73	at Chattanooga	84
J15	84	The Citadel (OT)	87
J17	72	at Appalachian State	97
J22	69	at Davidson	80
J24	61	UNC Greensboro	75
J29	64	East Tennessee State	75
J31	67	at Georgia Southern	69
F5	82	Western Carolina	85
F7	69	at Wofford	83
F12	60	at East Tennessee State	72
F14	78	Appalachian State	69
F19	71	at Western Carolina	88
F21	58	Davidson	71
F26	68	Furman	71
M2	72	Wofford@	81
<b>2064 (Total 6-23)</b>			<b>2247</b>

! United Airlines Invitational in Honolulu, Hawaii  
@ SoCon Tournament in Greenville, S.C.

<b>2000-2001</b>			
<b>VMI</b>			<b>Opp.</b>
N18	68	at Virginia Tech	92
N20	69	at James Madison	87
N29	74	Howard	57
D2	88	at Howard	91
D4	70	Virginia	89
D6	48	Morehead State	57
D16	81	at Old Dominion	89
D18	75	Randolph-Macon	62
D20	77	Mary Washington	47
D28	68	at South Carolina	82
J3	72	at Appalachian State	81
J6	70	Western Carolina	69
J10	71	at Furman	66
J13	64	at The Citadel	79
J15	69	UNC Greensboro	73
J20	60	at Davidson	68
J24	60	East Tennessee State	74
J27	62	at Western Carolina	82
J30	67	Davidson	70
F3	83	Chattanooga	77
F5	58	at UNC Greensboro	79
F10	68	Wofford	60
F12	73	Georgia Southern	78
F15	63	at Charleston Southern	57
F17	53	at College of Charleston	71
F21	62	at East Tennessee State	75
F24	73	Appalachian State	51
M1	59	vs. Georgia Southern#	76
<b>1905 (Total 9-19)</b>			<b>2039</b>

# SoCon Tournament in Greenville, S.C.

<b>2001-2002</b>			
<b>VMI</b>			<b>Opp.</b>
N16	76	Mary Washington	51
N28	87	at Morehead State	98
D3	73	at Virginia Tech	74
D5	57	at Kentucky	99
D8	98	St. Mary's (Md.)	72
D12	90	Charleston Southern	69
D15	77	Eastern Mennonite	51
D22	91	at Villanova	104
D28	82	at Richmond!	80
D29	84	vs. James Madison	94
J2	80	Western Carolina	90
J5	60	at Georgia Southern	100
J8	74	UNC Greensboro	80
J12	90	at East Tennessee State	101
J16	68	at Davidson	79
J19	55	College of Charleston	63
J21	93	at Appalachian State	91
J24	59	at Virginia	93
J26	76	Furman	68
J30	77	East Tennessee State	96
F2	68	at Wofford	78
F4	88	Appalachian State	81
F9	97	at Western Carolina (OT)	91
F11	64	at Chattanooga	91
F16	71	at UNC Greensboro	74
F18	55	The Citadel	55
F23	81	Davidson	77
F28	70	vs. The Citadel#	80
<b>2141 (Total 10-18)</b>			<b>2300</b>

! Spider Invitational in Richmond, Va.  
# SoCon Tournament in Charleston, S.C.

<b>2002-2003</b>			
<b>VMI</b>			<b>Opp.</b>
N23	68	Liberty	54
N25	56	at Tennessee	88
D1	76	at St. Francis (Pa.)	59
D5	66	at Virginia Tech	71
D7	77	UVA-Wise	66
D10	69	at Liberty	77
D14	100	Eastern Mennonite	57
D20	56	Mary Washington	60
D28	69	vs. Norfolk State!	70
D29	71	vs. Harvard!	67
D31	48	at Georgetown	55
J5	56	at Western Carolina	78
J11	84	Georgia Southern	91
J13	57	at UNC Greensboro	76
J18	62	East Tennessee State	67
J21	61	Davidson	60
J24	68	Appalachian State	85
J27	56	at College of Charleston	81
F1	55	at Furman	61
F4	76	at East Tennessee State	93
F8	93	Wofford (OT)	94
F10	64	at Appalachian State	83
F15	58	Western Carolina	61
F18	52	Chattanooga	77
F22	61	UNC Greensboro	60
F24	68	at The Citadel	59
M1	49	at Davidson	84
M5	62	vs. Furman#	56
M6	66	vs. Davidson#	60
M7	58	vs. Chattanooga#	77
<b>1952 (Total 10-20)</b>			<b>2147</b>

! Spider Invitational in Richmond, Va.  
# SoCon Tournament in Charleston, S.C.

<b>2003-2004</b>			
<b>VMI</b>			<b>Opp.</b>
N20	46	vs. Washington State !	66
N22	52	vs. Texas-San Antonio !	68
N23	63	vs. Binghamton !	72
D2	85	Southern Virginia	62
D5	56	Virginia	78
D10	56	at Virginia Tech	80
D13	107	Eastern Mennonite	94
D21	62	St. Francis (Pa.)	66
D23	56	at Louisville	107
D29	52	at Old Dominion	74
J3	48	at UNC Asheville	61
J8	69	Radford	58
J10	62	at Winthrop	78
J14	57	at High Point	78
J17	49	Birmingham-Southern	82
J20	46	at Liberty	66
J26	32	Coastal Carolina	49
J28	53	Charleston Southern	50
J31	68	Winthrop	61
F4	46	at Radford	63
F9	65	at James Madison	76
F11	51	UNC Asheville	59

F14	44	at Coastal Carolina	60
F16	49	at Charleston Southern	64
F21	61	Liberty	52
F25	75	High Point	76
F28	55	at Birmingham-Southern	67
M2	43	at High Point #	75
<b>1608 (Total 6-22)</b>			<b>1942</b>
<b>! BP Top of the World Classic in Fairbanks, Alaska</b>			
<b># Big South Tournament</b>			

<b>2004-05</b>			
<b>VMI</b>			<b>Opp.</b>
N22	71	Southern Virginia	33
N28	78	at Navy	73
D1	38	at Old Dominion	86
D4	72	Virginia Tech	66
D8	69	at Longwood (OT)	64
D11	69	Towson	84
D13	77	Bluefield	70
D28	49	at New Orleans	62
D31	74	at Tulane	82
J5	69	at Loyola (Md.)	70
J8	67	Charleston Southern	78
J10	68	Coastal Carolina	79
J15	77	at UNC Asheville	87
J19	62	Radford	78
J24	71	at Liberty	91
J26	72	at High Point	88
J29	59	Birmingham-Southern	66
J31	49	at Winthrop	66
F5	70	at Coastal Carolina	75
F7	50	at Charleston Southern	56
F10	65	Longwood	52
F12	72	UNC Asheville	77
F14	67	at Radford	54
F17	73	Liberty	67
F19	48	at Birmingham-Southern	60
F23	48	Winthrop	63
F26	69	High Point	61
<b>1748 (Total 9-18)</b>			<b>1893</b>

<b>2005-06</b>			
<b>VMI</b>			<b>Opp.</b>
N21	49	Army	53
N23	55	at N.C. State	75
N26	61	at James Madison	74
N30	62	Old Dominion	77
D2	80	UVA-Wise	50
D5	97	Ferrum	74
D8	72	at Army	63
D10	105	Southern Virginia	59
D21	80	at Towson	78
D29	79	Loyola (Md.)	87
D31	68	at Maryland	99
J5	73	Charleston Southern	76
J7	88	Coastal Carolina	77
J12	90	High Point	100
J14	84	Liberty	68
J18	53	at Birmingham-Southern	75
J21	65	at UNC Asheville	83
J26	77	at Radford	101
J30	69	Winthrop	74
F2	67	at Liberty	71
F4	59	Birmingham-Southern	74
F8	65	at Winthrop	98
F11	74	UNC Asheville	82
F15	72	at High Point	73
F18	48	at Charleston Southern	59
F20	63	at Coastal Carolina	76
F23	69	Radford	77
<b>1924 (Total 7-20)</b>			<b>2053</b>

# The Big South Conference



**Kyle Kallendar**  
*Commissioner*



**James Companion**  
*Associate Commissioner*



**Dawn Turner**  
*Associate Commissioner*



**Mark Simpson**  
*Director of  
Public Relations*



**Lauren Cooper**  
*Coordinator of Creative  
Services*



**Chad Cook**  
*Assistant Director of Marketing*

For more than 20 years, the Big South Conference has been a progressive, NCAA Division I athletic Conference reflecting the energy and growth of the Southeastern United States. Founded in 1983, the Big South has matured into a competitive leader in college athletics, actively pursuing excellence both on the field of play and in the classroom. Based in Charlotte, N.C., the Big South Conference's growing presence as an NCAA Division I athletic league is evident by competitive success on the national stage, innovative marketing and media partnerships, increased football and basketball television packages, the enhancement of the quality of the student-athlete experience, and strategic planning that has carried the Big South through the first decade of the 21st Century.

Now in its 23rd year of existence, the Big South Conference continues to emerge, providing quality athletic competition while intentionally fostering the academic, personal, social, athletic and leadership development of each student-athlete. The League consists of nine member institutions: Birmingham-Southern College, Charleston Southern University, Coastal Carolina University, High Point University, Liberty University, UNC Asheville, Radford University, Virginia Military Institute and Winthrop University, while its geographic breakdown features Alabama (1 member), North Carolina (2), South Carolina (3) and Virginia (3). Two new members will join the Big South footprint in 2008-09. Gardner-Webb University, an associate member in football, will become a full member, joining Presbyterian College, which is beginning its transition to Division I athletics in 2006.

In the Fall of 2002, the Big South welcomed the addition of football as a Conference sport, bringing the number of Division I championship programs the Big South sponsors to 18. The League sponsors nine championship sports for men: baseball, basketball, cross country, football, golf, soccer, indoor/outdoor track, and tennis, as well as nine for women: basketball, cross country, golf, soccer, softball, tennis, indoor/outdoor track and volleyball. Again this year, Big South champions in men's and women's basketball, men's and women's soccer, volleyball, men's and women's golf, baseball, softball, men's and women's tennis and men's and women's track & field will receive automatic bids to NCAA Championships.

The Big South continued its growing achievements in 2005-06, as the League experienced Top 15 rankings in the national RPI in baseball, softball and women's basketball, as well as Top 20 ranking in men's basketball and volleyball. Big South members defeated the No. 1 football and baseball team in the nation (Coastal Carolina football vs. James Madison and Winthrop baseball vs. North Carolina); the Big South had its first-ever national finalist for NCAA Woman of the Year (Winthrop's Janiva Willis); Liberty's Josh McDougal became the first Big South athlete to receive All-America honors in the three running sports in the same season (cross country, indoor track and outdoor track); the Big South placed two teams in the NCAA Baseball Regionals for the fifth time in six seasons; the Conference went 2-1 in its first-ever participation in the ESPN BracketBusters men's basketball event; Coastal Carolina men's golf reached the NCAA Championship for the second-straight year; the Big South had more than 20 All-Americans, including six first-team selections.

Last year's academic success mirrored the on-field achievements. A total of 32 Big South student-athletes were named Academic All-District, four of which earned Academic All-America accolades. In football, Charleston Southern's Adam DeGraffenreid was tabbed the I-AA Athletic Directors National Scholar-Athlete of the Year, the second time in three years the award was bestowed upon a Big South football player. In addition, 40.1% of the Conference's student-athletes achieved at least a 3.0 grade point average in 2005-06 and were named to the Big South's Presidential Honor Roll.

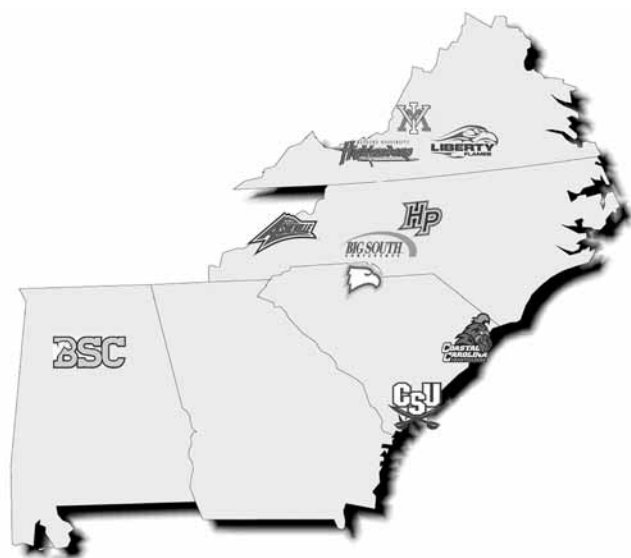
The Conference was formed on August 21, 1983, when Charleston Southern (then Baptist College) Athletic Director Howard Bagwell and Augusta President George Christenberry initially began recruiting members into the Big South. One month later, Dr. Edward M. Singleton was selected as the League's first Commissioner and continued to solicit new members. The League's seven charter members were Armstrong State, Augusta, Campbell, Charleston Southern, Coastal Carolina, Radford and Winthrop. In 1989, George F. "Buddy" Sasser replaced the retiring Dr. Singleton as Commissioner.

In August 1996, Kyle B. Kallander replaced Sasser, who would continue to serve the League as Director of Athletics at Coastal Carolina until his

retirement in 1999. In his 10 years at the helm of the Big South, Kallander has been instrumental in aggressively promoting the Conference, including the development of the Big South Marketing Group, which has resulted in increased revenues and exposure for the Conference and its members. He also brought television coverage to Big South women's basketball and baseball for the first in Conference history, created the Big South Television Network in 2001 -- which boasts a League-high 18 affiliates, and was the driving force behind the formation of the Big South Hall of Fame. Under Kallander's leadership, the Big South developed and initiated its first long-range strategic plan, re-affirming the League's vision as a distinctive athletic Conference committed to the quality of institutional life through athletic competition. In addition, Kallander has solidified membership with the addition of High Point in 1999, Virginia Military Institute in 2003 and future members Gardner-Webb and Presbyterian in 2008. Kallander's long range vision has also included technological advancements, as the Conference introduced its first live event video streaming last year, and plans are in the works to video stream every home women's basketball game in 2006-07. Kallander has also successfully integrated the Conference's profile with the member institutions' general student body, notably through the development of the Big South Academic Consortium, which sponsored the first annual Academic College Bowl among League members last February, and will feature an Undergraduate Research Symposium in the Spring of 2007.

The Big South continues to secure aggressive and unique television packages, making the Conference one of the leaders among all Division I Leagues in television exposure for its student-athletes. Entering this season, the 2007 Advance Auto Parts Men's Basketball Championship game will once again air on ESPN2 as part of the network's "Championship Week" programming. The Conference also boasts relationships with FSN South, Comcast SportsNet (CSN), Comcast Sports Southeast (CSS), College Sports Television (CSTV), Fox College Sports (FCS) and ESPNU. In addition, the Big South Television Network (BSTN) will again air football and basketball games to local affiliates throughout the region.

# The Big South Conference



## The Big South Conference

7233 Pineville-Matthews Road  
Suite 100  
Charlotte, NC 28226

**Office Phone:** (704) 341-7990

**Media FAX:** (704) 341-7991

**Kyle Kallander**, *Commissioner*

**James Companion**, *Associate Commissioner*

**Dawn Turner**, *Associate Commissioner*

**Marcia Hollingsworth**, *Director of Operations*

**Mark Simpson**, *Director of Public Relations*

**Chad Cook**, *Assistant Director of Marketing*

**Lauren Cooper**, *Coordinator of Creative Services*

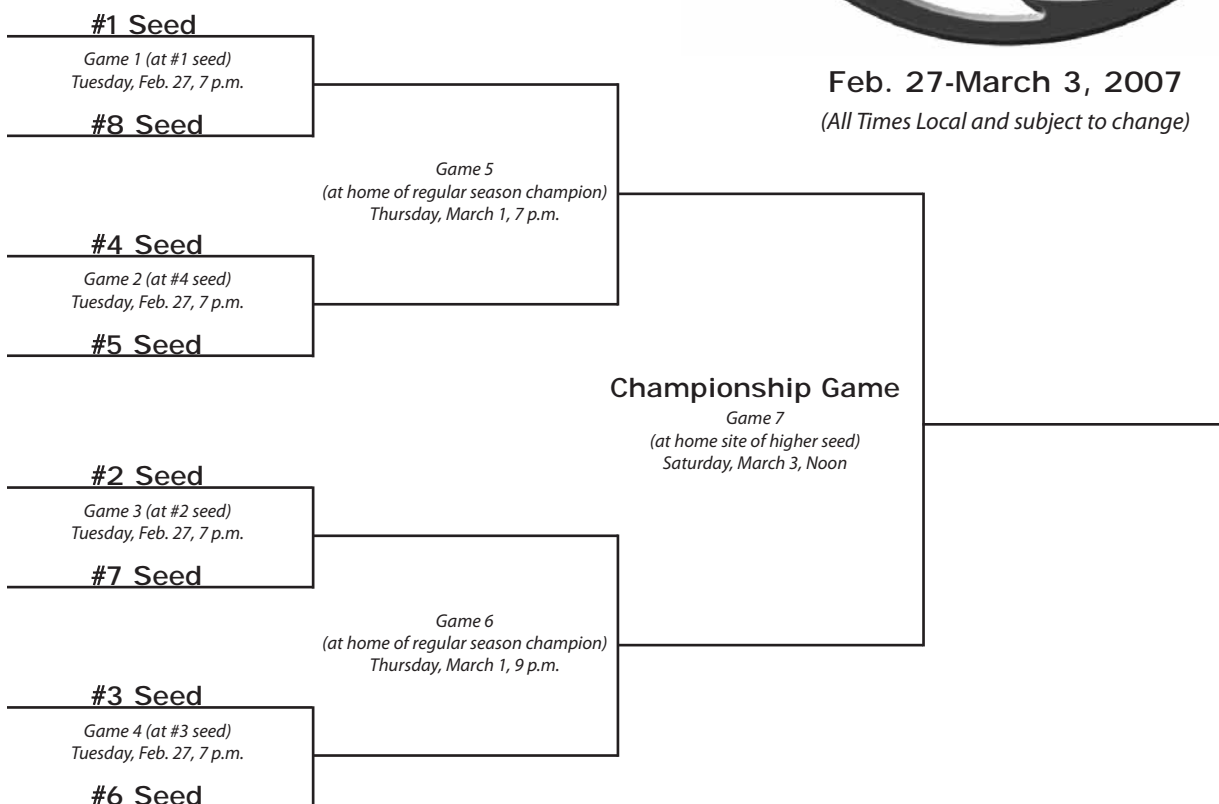
**Nic Bowman**, *Assistant Director of Public Relations*

**Justin Simpson**, *Marketing Assistant*



Feb. 27-March 3, 2007

(All Times Local and subject to change)



# ***VMI Basketball Fund***

## ***Donors***

***VMI Basketball would like to extend its appreciation and sincere gratitude to the following donors who have made contributions to the VMI Basketball Discretionary Fund. This fund furnishes supplemental support to the Runnin' Roos to provide the competitive edge needed to compete successfully in Division I NCAA Basketball.***

***Maryann and Gerald Acuff***

***Bernie Banas***

***Bernie Banas (Hershey  
Foods Corporation)***

***Col. and Mrs. John G. Barrett***

***Mr. and Mrs. Buzz Birzenieks***

***Col. and Mrs. Norman Bissell***

***Paul Bouis***

***Peyton Brown '69***

***Jim and Ruth Chapman***

***John S. Cockey, Jr.***

***Martin and Michelle Cristo***

***Col. Tom and Helen Davis***

***John and Carol Goode***

***Charles T. Gundlach***

***Dr. and Mrs. John T. Gupton***

***The Honorable Thomas P.  
Harwood '50B***

***Norman and Sharon  
Halbertstadt***

***Sam H. Hall***

***Mr. and Mrs. John Hartung***

***Kevin Henry***

***Richard Hewitt***

***Roderick and Jean Kallgren***

***John and Debra Kemper***

***Dr. L.M. Lieberman***

***Paul C. Marks***

***Mr. Gil Minor, III***

***Mrs. Jane Patton***

***Col. George and Melou  
Piegari***

***John and Virginia  
Poindexter***

***Donnie and Barbara Ross***

***The Roundball Club***

***Ira and Mary Saxe***

***Joe O. Smith & Laoretta  
Clough***

***Gordon Smith***

***Bill and Linda Stephens***

***Major General Thomas and  
Margaret Tait***

***Harold and Wanda  
Templeton***

***Vincent J. Thomas***

***John and Shirley  
Vanlandingham***

***Mr. and Mrs. Ralph Wright***

# LEXINGTON, VIRGINIA AND ROCKBRIDGE COUNTY

**R**ockbridge County is located toward the south end of the Shenandoah Valley of Virginia. The county takes its name from Natural Bridge, the massive stone formation that spans Cedar Creek in the southern part of the county.

For centuries, this area has been a natural thoroughfare from the northeast to the richness of the lands west of the Appalachians. The Cherokee and Monacan Indian tribes lived in the area prior to its settlement by European colonists, which began in the 1730's.

Most of the settlers were Scotch-Irish and Germans, who migrated south from Pennsylvania in search of more land. Several large land grants, notably one to Benjamin Borden, stimulated settlement in the 1740's. Grantees were required to induce a certain number of families to settle on the granted land. The Borden Grant, originally 100,000 acres, included most of present-day Rockbridge County.

In 1777, Rockbridge County was established, and the town of Lexington was founded as the county seat.

A defining event occurred in 1782, when Liberty Hall Academy was moved from Augusta County to a site just west of Lexington. The school's future was assured in 1796, when George Washington gave it \$50,000 worth of James River Canal stock, at that time the largest such bequest to a college in the history of the new nation. The school was renamed Washington College in the general's honor, and soon moved to its present location after the Liberty Hall building burned. The ruins of Liberty Hall can still be seen just north of Rt. 60 at the western edge of town.

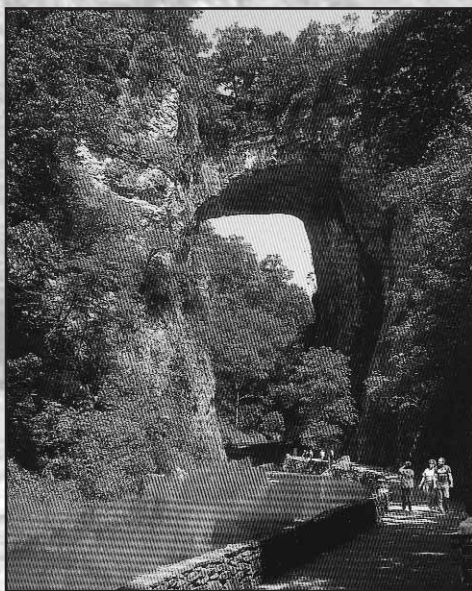
In 1839, the Virginia legislature established Virginia Military Institute at Lexington, in what had previously been a state arsenal. VMI has educated thousands of citizen-soldiers in its more than 150-year existence, including Gen. George C. Marshall, Gen. George S. Patton, and Adm. Richard E. Byrd.

The Civil War had a devastating effect on Lexington and its people. Raiding Federal troops burned VMI in 1864. Graduates of VMI and Washington College served with distinction in many campaigns of the war, and the VMI Corps of Cadets fought as a unit at the Battle of New Market. Gen. Thomas J. "Stonewall" Jackson, a professor at VMI until the war, is remembered as one of the history's greatest military strategists. Jackson is buried in Jackson Memorial Cemetery, along with many other Civil War veterans.

After the war, Gen. Robert E. Lee was persuaded to come to Lexington to serve as president of Washington College. Lee revitalized the



*The city of Lexington, Va. is nationally renowned for its beauty and charm.*



*Natural Bridge*

school, modernized the curriculum, and encouraged reconciliation between the North and South. After his death in 1870, the school's trustees renamed it Washington and Lee University.

Around 1890, a speculative boom hit western Virginia. Numerous towns were established by development companies, with a grand hotel as a centerpiece. Streets were laid out and lots sold, and resold, at ever inflating prices. Buena Vista and the towns of Glasgow and Goshen were all founded as a result of the boom. When the bubble burst, many of these boom towns stag-



*Goshen Pass in Rockbridge County*

nated.

Buena Vista weathered the crash and became the industrial center of the county. The boom-era hotel is now Main Hall at Southern Virginia University.

We invite you to visit our museums - the Marshall Museum, the VMI Museum, and the Stonewall Jackson House; walk the campuses of our towns, take a drive on the Blue Ridge Parkway, see a horse show at the Virginia Horse Center, enjoy a cool swim in Goshen Pass, take in a play in the natural setting of Lime Kiln Theater, or browse in our many distinctive shops.